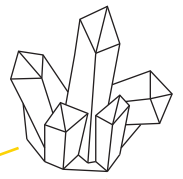


Topics in Mineralogy



Epic Fail

**Professor June Wicks
and Jenna Frye**

(visiting MICA Professor)

Tuesday **1:30 pm - 4:30 pm**

Open Lab **4:30 pm - 7:30 pm**

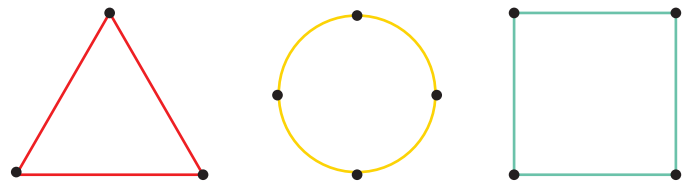
Olin Hall

This semester, join **HEMI's Designer in Residence**, and MICA professor Jenna Frye, in a modified version of her popular experimental fabrication course, EPIC FAIL.

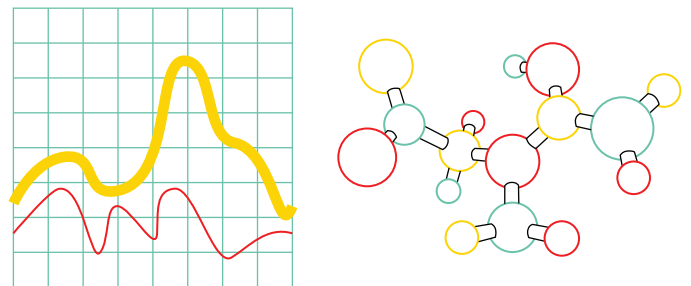
Discover how thinking with your hands, embracing risk and failure and playful exploration with educational toys, can invigorate your research in mineralogy and deepen your understanding of crystallography visualization. This course is designed as a **hands-on, deeply collaborative workshop**, where we will investigate the role of creative fabrication technology and invention as it relates to communicating scientific research to outside audiences. Together we will make, tinker and fail our way to improved visualization and presentation strategies so that others may more fully access the complexities in our work.

Topics in Mineralogy is a special topics course that rotates in subject and may be taken multiple times for credit.

Learn Basic Design



Visualization and
Model Making



No Prerequisites;
Open to All!

