

# A method for estimating the extent of denitrification of arctic polar vortex air from tracer-tracer scatter plots

J. G. Esler

Department of Mathematics, University College, London, England, UK

D. W. Waugh

Department of Earth and Planetary Sciences, Johns Hopkins University, Baltimore, Maryland, USA

Received 12 July 2001; revised 10 October 2001; accepted 11 October 2001; published 4 July 2002.

[1] A method for estimating the extent of denitrification of Arctic polar vortex air is proposed. Previous estimates of denitrification using tracer-tracer scatter plots have not allowed for mixing-induced changes in tracer-tracer relationships in a sufficiently general way. This difficulty is overcome by constructing an artificial “reference tracer” from a linear combination of other long-lived tracers. The reference tracer is designed so that, as far as possible, it has a linear canonical relationship with  $\text{NO}_y$  in midlatitudes. A linear relationship is unaffected by mixing, so denitrification is apparent as deviations of vortex measurements from the linear midlatitude relationship. The method is first demonstrated using data from a chemical transport model in which no denitrification processes are present. It is then applied to balloon, aircraft and shuttle-borne measurements made before and during the breakdown of the Arctic vortex in 1992–1993 and 1996–1997. In each case the method indicates that little or no denitrification had occurred in any of the vortex air encountered. When the method is applied to the southern hemisphere vortex in 1994, by contrast, denitrified air is clearly seen to be present around 19–23 km in the vortex. **INDEX TERMS:** 0340 Atmospheric Composition and Structure: Middle atmosphere—composition and chemistry; 0341 Atmospheric Composition and Structure: Middle atmosphere—constituent transport and chemistry (3334); **KEYWORDS:** denitrification, stratosphere, scatter plots, Arctic, vortex

## 1. Introduction

[2] The extent of denitrification and ozone loss in Arctic polar vortex air exhibits large interannual variability, which is due to the strong temperature dependence of the processes involved. Denitrification can be defined as irreversible removal of the nitrogen family  $\text{NO}_y$ , where

$$\text{NO}_y = \text{HNO}_3 + \text{HNO}_4 + \text{NO} + \text{NO}_2 + \text{ClONO}_2 + 2 \text{N}_2\text{O}_5. \quad (1)$$

Denitrification occurs through the sedimentation of  $\text{HNO}_3$ -bearing polar stratospheric cloud (PSC) particles, and these form at low temperatures during winter in the Arctic region. Significant denitrification leads to an increase in the lifetime of ozone-depleting chlorine species ( $\text{ClO}_x$ ), and therefore leads to an increase in the duration and extent of springtime Arctic ozone loss. It has been suggested that slight cooling in the Arctic due to climate change could lead to enhanced denitrification in the future, and this could lead to larger seasonal ozone depletion, despite the projected decline in inorganic chlorine [Waibel *et al.*, 1999; Tabazadeh *et al.*, 2000].

[3] Small uncertainties in analyzed temperatures make quantitative modelling of denitrification subject to potentially large errors. This makes it particularly important that

denitrification can be inferred from direct observations. However, transport processes in the stratosphere mean that it is not possible to directly compare measurements at a given location with those made earlier in the winter. Instead, some authors have exploited the fact that long-lived tracers in the stratosphere tend to exhibit compact, robust relationships [Fahey *et al.*, 1990; Plumb and Ko, 1992].

[4] Fahey *et al.* [1990] and Rinsland *et al.* [1999] have both used the standard midlatitude  $\text{NO}_y$ : $\text{N}_2\text{O}$  relationships to predict  $\text{NO}_y$  concentrations in the absence of denitrification processes and interpreted deviations from this relationship in vortex measurements as being due to denitrification. Other authors have used a similar approach to estimate chemical ozone loss [Proffitt *et al.*, 1990; Müller *et al.*, 1996, 1997]. However, it has also been recognized that tracer relationships can also be altered by mixing processes, and deviations from standard relationships between long-lived species have been attributed to mixing by Waugh *et al.* [1997a] and Michelsen *et al.* [1998a, 1999]. Following this reasoning Michelsen *et al.* [1998b] and Kondo *et al.* [1999] attribute measured deviations from the standard midlatitude  $\text{NO}_y$ : $\text{N}_2\text{O}$  relationship as being due to mixing rather than denitrification.

[5] An attempt to distinguish between mixing and denitrification effects on the  $\text{NO}_y$ : $\text{N}_2\text{O}$  relationship was recently made by Rex *et al.* [1999]. They analyzed data from the 1996–1997 and 1992–1993 northern winters, much of which will be further treated in this paper. Treating  $\text{CH}_4$  and  $\text{N}_2\text{O}$  as long-lived species, they estimated the amount of

mixing undergone by vortex air by using the deviation from the standard midlatitude  $\text{CH}_4:\text{N}_2\text{O}$  canonical relationship. From this information the change to the standard  $\text{NO}_y:\text{N}_2\text{O}$  relationship due to mixing alone was estimated, and any remaining discrepancy with the observed  $\text{NO}_y:\text{N}_2\text{O}$  ratio was attributed to denitrification. They recognized, however, that their estimation of the mixing effect was dependent on their assumption that the ex-vortex air had undergone a single mixing event near the level at which it was observed (scenario A below). Comparing late winter measurements within the vortex with later measurements in filaments during the 1992–1993 winter/spring, *Plumb et al.* [2000, hereinafter referred to as PWC], argued that most mixing had in fact taken place before the vortex breakup. They suggested that midlatitude air may have been mixed into the vortex intermittently at several levels during the winter (scenario B below). If the *Rex et al.* [1999] method is used in this case, PWC argued that using different long-lived tracers to estimate the mixing effect might yield different results.

[6] In section 2 the two mixing scenarios mentioned above are discussed, concentrating on their effect on tracer-tracer relationships. We then describe a method for determining denitrification (and irreversible loss in general) from direct measurements, in the presence of mixing of any kind. The information from the measurements of several long-lived tracers is exploited to account for the change in  $\text{NO}_y$  concentration due to mixing alone, as far as this is possible. The method is then applied to both chemical transport model data in section 3 and aircraft, balloon, and shuttle-borne measurements in sections 4 and 5. Our conclusions, as well as brief discussion of the possible application of the method to chemical ozone loss, are given in section 6.

## 2. Mixing Scenarios and the Reference Tracer Method

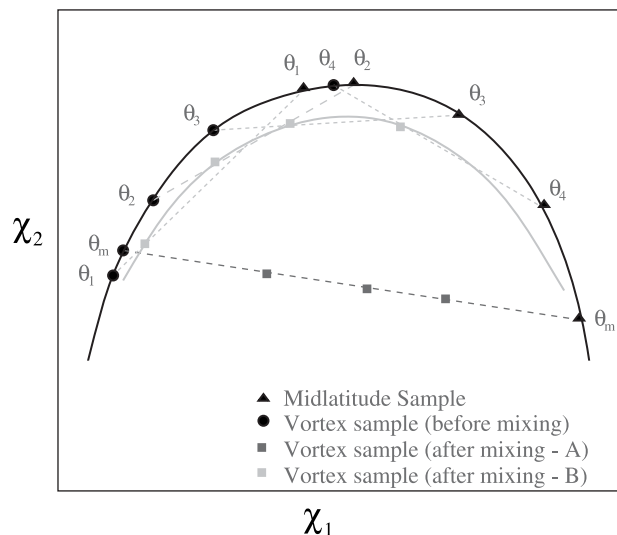
[7] In regions of the stratosphere where the following two conditions are satisfied, the isopleths of long-lived tracers become coincident and a tracer-tracer scatter plot of any two tracers shows a compact relationship (i.e., points on a scatter plot lie upon a straight or curved line.) The two conditions are the following [*Plumb and Ko*, 1992; *Plumb*, 1996]:

1. The timescale for transport along rapid exchange surfaces (in this case isentropic surfaces) is much faster than the timescale for transport across those surfaces.

2. The timescale for transport along isentropic surfaces is much faster than the local chemical timescale.

[8] These conditions are satisfied both in the winter midlatitude stratosphere and arguably in the interior of the polar vortex (although not in the vortex edge region) for long-lived species, e.g.,  $\text{N}_2\text{O}$ ,  $\text{NO}_y$ ,  $\text{CH}_4$ , and CFCs. If two species have everywhere spatially similar sources and sinks the relationship between them will be linear, that is, a scatter plot of measurements of both species will lie on a straight line. Differences in the spatial structure of sources and sinks lead to nonlinearity in tracer relationships, that is, curvature in the correlations between them.

[9] The black curve in Figure 1 shows a hypothetical, nonlinear, canonical tracer-tracer relationship between two long-lived species  $\chi_1$  and  $\chi_2$ . At the beginning of the winter this relationship is expected to hold both inside and outside the polar vortex.



**Figure 1.** The effect on the canonical tracer-tracer relationship between long-lived species  $\chi_1$  and  $\chi_2$  of different mixing scenarios. In scenario A, no mixing takes place between vortex and midlatitude air until late in the winter when a single mixing event takes place on the isentropic level  $\theta_m$ . Samples of mixed air then lie along the dark grey dashed mixing line. In scenario B, air is mixed into the vortex from midlatitudes on many isentropic levels, including  $\theta_1$ – $\theta_4$ . These mixing events have the effect of changing the vortex relationship so that it lies along the light grey curve.

[10] During the winter, air within the vortex descends. If there is no mixing for a prolonged period the canonical  $\chi_2:\chi_1$  relationship still holds everywhere. If there is then a single mixing event, which we shall call scenario A, at level  $\theta_m$  between the vortex and midlatitudes, the mixed air will lie on an anomalous mixing line, illustrated by the dark grey dashed line, in tracer space.

[11] Mixing scenario B is that of continuous mixing. The grey curve and dotted lines illustrate how the vortex relationship evolves if there are mixing events at many levels  $\theta_1$ – $\theta_4$  in midwinter. The mixing causes the vortex relationship to become distinct from that of the midlatitudes, which is less easily altered by mixing with the vortex (due to the greater area of the midlatitudes). Further mixing may then cause the vortex relationship to become yet more distinct.

[12] In principle, the information from several conserved tracers can be combined to reveal information about the mixing history of observed air parcels. A parcel descending in the vortex may have been mixed with extratropical air at several levels, changing its  $\text{NO}_y$  concentration even in the absence of chemistry. It is therefore helpful to define  $[\text{NO}_y^\dagger]$  to be the expected concentration of  $\text{NO}_y$  in an air parcel in the absence of chemistry. Since long-lived tracers such as  $\text{N}_2\text{O}$ ,  $\text{CH}_4$ , CFC-11, CFC-12, and CFC-113 have also undergone mixing, we might hope to predict  $[\text{NO}_y^\dagger]$  using information derived from the change in their canonical relationships.  $[\text{NO}_y^\dagger]$  is essentially equivalent to  $[\text{NO}_y^{**}]$  defined by *Rex et al.* [1999] but will be estimated by the method to be described.

[13] If a conserved tracer happened to have a linear canonical relationship with  $\text{NO}_y$  at the beginning of the winter, the situation is less complicated. Instead of causing

departures from the canonical relationship, mixing can only move parcels along it in tracer space.  $[\text{NO}_y^+]$  can therefore be read directly from the canonical relationship, and denitrification is given by  $[\text{NO}_y^+] - [\text{NO}_y]$ .

[14] Unfortunately, no such tracer exists. However, we shall show in what follows that an artificial tracer ( $\mathcal{X}$ ) may be constructed by adding together a linear combination of long-lived tracers, in order to form a tracer which has, as near as possible, a linear relationship with  $\text{NO}_y$ . We shall refer to this tracer as the “reference tracer.” Note that as the reference tracer is constructed from long-lived tracers it will also be long-lived. Because it is a linear combination of other tracers, it undergoes linear mixing like any of its constituent tracers. Using this tracer, we can estimate  $[\text{NO}_y^+]$  and denitrification.

[15] The method we used for constructing the reference tracer ( $\mathcal{X}$ ) is described in Appendix A. Our starting point was to obtain midlatitude canonical correlations between all the species to be used in each case and  $\text{N}_2\text{O}$ . These relationships were then used as a guide to constructing the reference tracer. This was done by forming a set of simultaneous equations in the tracer coefficients, that were equivalent to forcing the midlatitude  $\text{NO}_y:\mathcal{X}$  relationship to intersect the straight line  $[\text{NO}_y] = [\mathcal{X}]$  at several points. The positions of these points were chosen by trial and error for best results.

[16] The result in each case is a double-valued canonical relationship. This can be expressed as functions of  $[\mathcal{X}]$ , i.e.,  $[\text{NO}_y]^+([\mathcal{X}])$ , and  $[\text{NO}_y]^-([\mathcal{X}])$ . The two branches correspond to the  $[\text{N}_2\text{O}]$  ranges  $[\text{N}_2\text{O}] > [\text{N}_2\text{O}]_M$  and  $[\text{N}_2\text{O}] < [\text{N}_2\text{O}]_M$  respectively, where  $[\text{N}_2\text{O}]_M$  (approx 40–65 ppbv) is the  $\text{N}_2\text{O}$  concentration associated with the maximum  $\text{NO}_y$  concentration in the mid-stratosphere. Both of these branches lie on or close to the straight line  $[\text{NO}_y] = [\mathcal{X}]$  for the range of  $[\text{N}_2\text{O}]$  values over which mixing is likely to take place. This canonical relationship can be used to estimate  $[\text{NO}_y^+]$  for vortex measurements that may have undergone denitrification, using

$$[\text{NO}_y^+] = [\text{NO}_y] \pm ([\mathcal{X}] - [\text{NO}_y]) \quad (2)$$

for the measured ( $\mathcal{X}$ ). The plus or minus branch is chosen depending on whether or not  $[\text{N}_2\text{O}] > [\text{N}_2\text{O}]_M$ . The appropriate estimate for denitrification is then simply  $[\text{NO}_y^+] - [\text{NO}_y]$ .

[17] It is important to emphasize that the initial canonical relationships are used merely as an aid to obtaining a linear  $\text{NO}_y:\mathcal{X}$  relationship; i.e. they are not necessary for its construction. If the initial canonical relationships used do not accurately fit the data, then the data points need not lie along the calculated  $\text{NO}_y:\mathcal{X}$  canonical relationship. The need for initial canonical relationships may be avoided by instead using a least squares fit of the data. In this method the coefficients  $a$  to  $e$  of the reference tracer are obtained by finding those values of  $a$  to  $e$  that minimize a function with the form

$$f(a, b, c, d, e) = \sum (a[\text{N}_2\text{O}] + b[\text{CH}_4] + c[\text{CFC 11}] + d[\text{CFC 12}] + e[\text{NO}_y])^2. \quad (3)$$

Here the sum is taken over all the available midlatitude or early winter data. Note that for this method to work the data must cover the entire  $[\text{N}_2\text{O}]$  range over which mixing may

occur. Regions of sparse data may need to be positively “weighted” when the sum is taken, and data points derived from canonical correlations might be used where data is absent. Provided this is not necessary, however, this alternative method bypasses the need to use canonical relationships in deriving the tracer coefficients.

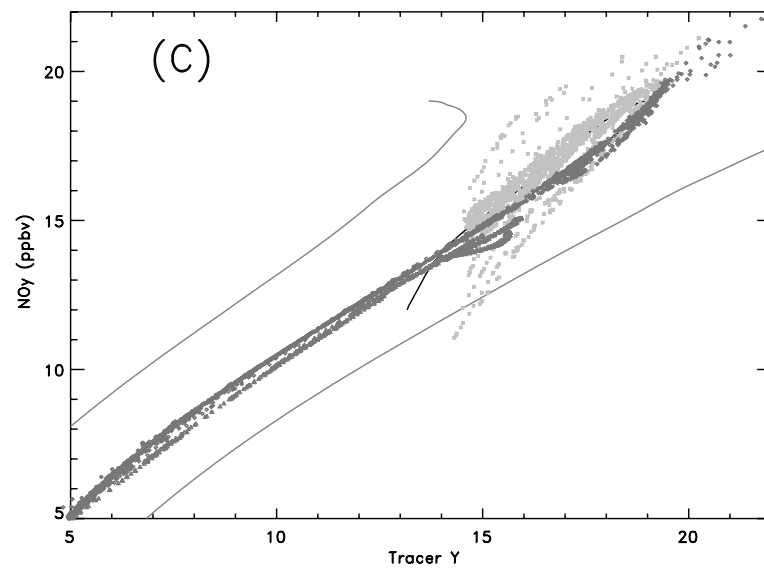
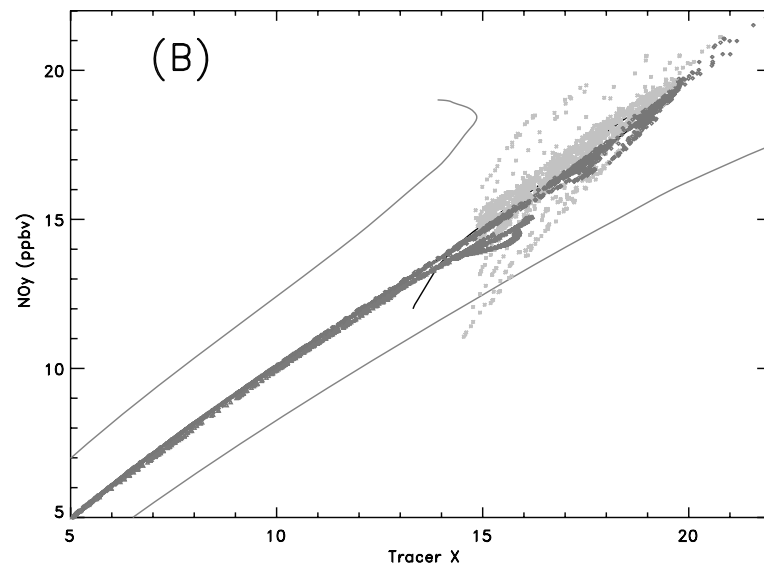
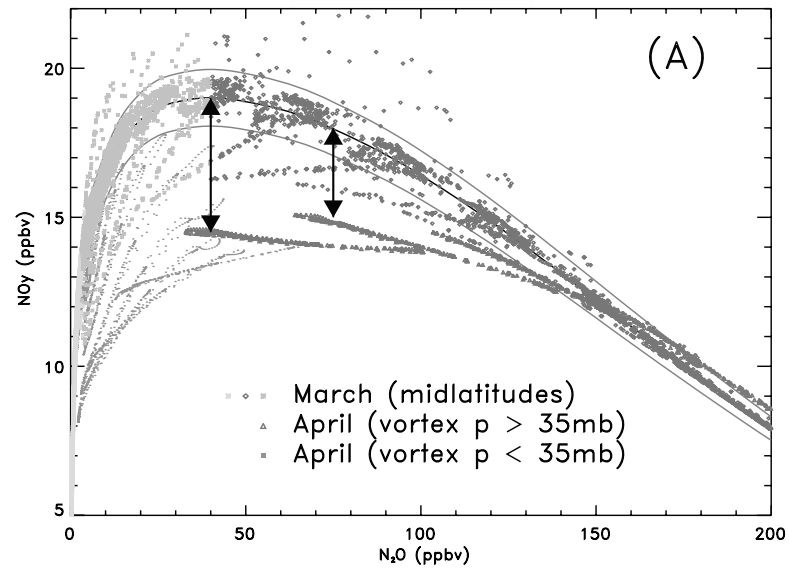
### 3. Application to Chemical Transport Model Results

[18] In this section the reference tracer method will be applied to results from a chemical transport model experiment [Waugh *et al.*, 1997b; PWC]. No denitrification processes are included in the model chemistry, so  $\text{NO}_y$  behaves as a long-lived tracer throughout the model experiment (i.e.,  $[\text{NO}_y^+] = [\text{NO}_y]$ ). Figure 2a shows a typical midlatitude  $\text{NO}_y:\text{N}_2\text{O}$  scatter plot. The red, orange, and yellow points are samples from the Northern Hemisphere midlatitudes, colored according to their  $\text{N}_2\text{O}$  concentration, taken from the 1 March results. The samples form a fairly compact canonical correlation for the model midlatitudes, and the canonical curves shown on this and subsequent plots are fits to this data. Also on this plot are blue and cyan points showing samples from the model arctic vortex on 1 April (blue- below 35 mbar level, cyan- above 35 mbar level). In the range  $5 < [\text{N}_2\text{O}] < 150$  ppbv the vortex samples lie significantly below the midlatitude correlation. Prior to the vortex forming, the midlatitude and high-latitude  $\text{NO}_y:\text{N}_2\text{O}$  relationships are similar (PWC). The change cannot be due to denitrification as none has been included in the model chemistry, so it must be due to mixing. In fact, as shown in PWC, high  $[\text{N}_2\text{O}]$  midlatitude air is mixed into the vortex throughout the winter in the model (scenario B above), causing the  $\text{NO}_y:\text{N}_2\text{O}$  relationship to change inside the vortex. Although there is also mixing of low  $[\text{N}_2\text{O}]$  air out of the vortex, the much greater volume of the midlatitude surf zone means that the midlatitude  $\text{NO}_y:\text{N}_2\text{O}$  relationship barely changes.

[19] A contrasting picture can be obtained by using a reference tracer that has been constructed to be, as near as possible, linear in its canonical correlation with  $\text{NO}_y$ . We have constructed three different reference tracers from different combinations of long-lived tracers as shown in Table 1. Looking first at the  $\text{NO}_y:\mathcal{X}$  relationship in Figure 2b, the lack of significant deviations of the modelled data from a straight line demonstrates that no real denitrification is taking place. The tracer  $\mathcal{X}$  is defined by the combination

$$[\mathcal{X}] = 0.0335[\text{CH}_4]_{\text{ppb}} + 0.0040[\text{CFC 11}]_{\text{ppt}} + 0.0393[\text{CFC 12}]_{\text{ppt}} - 0.125[\text{N}_2\text{O}]_{\text{ppb}} + 8.759. \quad (4)$$

The  $\text{NO}_y:\mathcal{X}$  canonical correlation is close to being linear in the midlatitudes for the range  $300 \text{ ppbv} > [\text{N}_2\text{O}] > 6 \text{ ppbv}$ , i.e., the red and orange points. Mixing between any two points in tracer space, with  $300 \text{ ppbv} > [\text{N}_2\text{O}] > 6 \text{ ppbv}$ , cannot cause significant departure from the canonical relationship. In Figure 2b the blue points from the vortex (below the 35 mbar level) lie along the  $\text{NO}_y:\mathcal{X}$  canonical relationship. These are the same points that from a naive reading of Figure 2a might have been thought to represent denitrified air. The reference tracer method therefore proves directly from the model data that  $[\text{NO}_y^+] = [\mathcal{X}]$  and no significant denitrification has taken place.



**Table 1.** Showing Constituents Species for Each Reference Tracer

Tracer	N <sub>2</sub> O	CH <sub>4</sub>	CFC-11	CFC-12	CFC-113
X	*	*	*	*	—
Y	*	*	*	—	*
Z	*	*	—	*	—

[20] The light blue points in Figure 2a (not plotted on Figure 2b) are vortex samples measured on model levels above the 35 mbar surface. Most of these happen to have undergone mixing with air that originally had  $[\text{N}_2\text{O}] < 6$  ppbv, so it is not appropriate to use the  $\text{NO}_y$ :X plot to distinguish between denitrification and mixing for these points. In fact, they lie below the canonical curve in Figure 2b. Those orange points that do fall below the canonical curve in Figure 2b have also mixed with air that has  $[\text{N}_2\text{O}] < 6$  ppbv. (The points that lie above the curve have mixed with tropical air, which has separate distinct canonical correlations and therefore does not lie on  $[\text{NO}_y]$  [X]). Clearly, the range in  $\text{N}_2\text{O}$  space that the  $\text{NO}_y$ :X midlatitude canonical relationship remains linear is important, as the method cannot be applied when mixing with air that contains  $\text{N}_2\text{O}$  concentrations outside the linear range has occurred. Perhaps surprisingly, we shall show in the next section that it is easier to construct a reference tracer that is linear with  $\text{NO}_y$  to higher levels (1–3 ppbv  $[\text{N}_2\text{O}]$ ) with observed canonical correlations than it is with the CTM canonical correlations. This may be because of model lid effects in the CTM. The problem of limited applicability in altitude of the reference tracer method is therefore less problematic in the observational data sections that follow. The altitudes at which it is most important to be able to distinguish between mixing and denitrification effects are 18–22 km (below 50 mbar) [Kondo *et al.*, 1999]. An important question for the method is whether or not a significant mass of air that has low  $\text{N}_2\text{O}$  concentration, outside the linear range for the reference tracer, descends to this level over the course of the winter. Comparing vertical descent rates and vertical profiles of  $\text{N}_2\text{O}$  [Schmidt *et al.*, 1991; Bauer *et al.*, 1994; Abrams *et al.*, 1996b], the possibility that some mesospheric air with very low  $\text{N}_2\text{O}$  reaches the 18–22 km level by the end of the winter cannot be completely ruled out. However, the absence of any hint of mixing lines with very low  $\text{N}_2\text{O}$  air in any of the tracer data that we present here makes this seem unlikely for both the CTM data and the relatively warm winters, with correspondingly weak descent, of 1992–1993 and 1996–1997.

[21] Applying the method with a second combination of tracers,

$$[\text{Y}] = 0.0303[\text{CH}_4]_{\text{ppb}} + 0.030[\text{CFC } 11]_{\text{ppt}} \\ 0.272[\text{CFC } 113]_{\text{ppt}} - 0.119[\text{N}_2\text{O}]_{\text{ppb}} + 9.06 \quad (5)$$

yields very similar results (Figure 2c). We shall show in the following sections that it is useful to have more than one

possible combination when using observational data, because of variations in the range of applicability in altitude and error sensitivities when using different species. We have also exploited the fact that the CFC-11 coefficient in the definition of X (equation (4)) is effectively fairly small, by defining Z to be equal to X without a CFC-11 component; that is,

$$[\text{Z}] = 0.0335[\text{CH}_4]_{\text{ppb}} - 0.0393[\text{CFC-12}]_{\text{ppt}} \\ 0.125[\text{N}_2\text{O}]_{\text{ppb}} + 8.759. \quad (6)$$

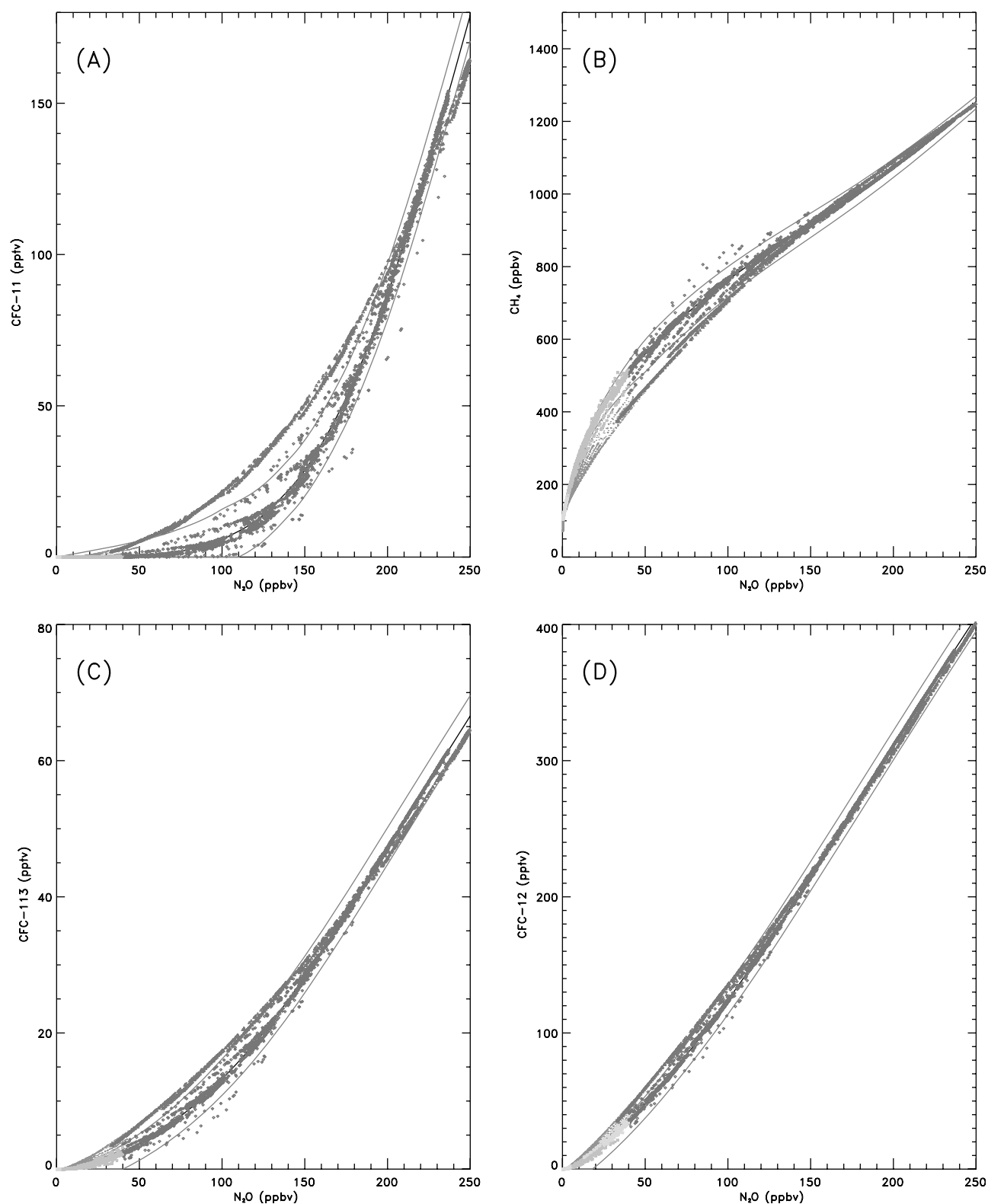
Again, this yields similar results (not shown), with the obvious advantage of requiring only three (rather than four) simultaneously measured species.

[22] Figure 3 show scatter plots of the species that make up X, Y, and Z with  $\text{N}_2\text{O}$ , CFC-11: $\text{N}_2\text{O}$  (Figure 3a),  $\text{CH}_4$ : $\text{N}_2\text{O}$  (Figure 3b), CFC-113: $\text{N}_2\text{O}$  (Figure 3c), and CFC-12: $\text{N}_2\text{O}$  (Figure 3d). In each panel it is clear that the blue vortex points lie on the concave “mixing” side of the midlatitude canonical correlation traced out by the orange and red points. That is, the blue points lie below the canonical correlation in the case of  $\text{CH}_4$ : $\text{N}_2\text{O}$ , and above it for CFC-11: $\text{N}_2\text{O}$ , CFC-12: $\text{N}_2\text{O}$ , and CFC-113: $\text{N}_2\text{O}$ . It is clear, particularly from Figures 3a and 3c, that the vortex points do not lie along a single straight mixing line, illustrating that midlatitude air must have mixed into the vortex during several mixing events and/or by continuous weak mixing as suggested by PWC for this CTM experiment.

[23] The grey curves in Figures 2a and 3a–3d represent reasonable bounds on the scatter of the midlatitude canonical correlation of the four species with  $\text{N}_2\text{O}$ . If the deviations from each of these four midlatitude relationships were completely independent from each other at every CTM grid point, the scatter in the  $\text{NO}_y$ :X plot would be given by the grey curves in Figure 2b; that is, it would be around 4 ppbv of  $\text{NO}_y$ . However, the  $\text{NO}_y$ :X scatter is actually much less than the  $\text{NO}_y$ : $\text{N}_2\text{O}$  scatter in the CTM. We believe the reason for this is most of the CTM scatter is due to weak vortex-midlatitude mixing, and the reference tracer method accounts for much of this just as it accounts for the stronger mixing into the vortex. However, this does mean that scatter caused by genuinely independent errors such as instrument inaccuracy will be greater for  $\text{NO}_y$ :X than  $\text{NO}_y$ : $\text{N}_2\text{O}$ . It is therefore difficult to place a priori bounds on the scatter in the  $\text{NO}_y$ :X relationship, as “mixing scatter” will exist in the real atmosphere as well as in the CTM. The actual scatter must necessarily be obtained by simply plotting out the reference  $\text{NO}_y$ :X relationship.

[24] The above method works by efficiently combining the extra information on mixing history of an air parcel contained in the ratios of the long-lived species, e.g., CFC-11: $\text{N}_2\text{O}$ , CFC-113: $\text{N}_2\text{O}$ , and  $\text{CH}_4$ : $\text{N}_2\text{O}$ . Each of these ratios

**Figure 2.** (opposite) Tracer-tracer scatterplots from the chemical transport model experiment of Waugh *et al.* [1997b]: (a)  $\text{NO}_y$ : $\text{N}_2\text{O}$ , (b)  $\text{NO}_y$ :X, and (c)  $\text{NO}_y$ :Y. The yellow-orange-red points are typical midlatitude samples from 1 March, (yellow,  $[\text{N}_2\text{O}] < 6$  ppbv; orange,  $4 \text{ ppbv} < [\text{N}_2\text{O}] < 40 \text{ ppbv}$ ; red,  $[\text{N}_2\text{O}] > 40 \text{ ppbv}$ ). The cyan-blue points are vortex measurements from 1 April (cyan,  $p < 35 \text{ mbar}$ ; blue,  $p > 35 \text{ mbar}$ ). The black arrows in Figure 2a indicate “apparent denitrification.” Standard midlatitude canonical correlations are plotted as black curves and grey curves mark bounds on the scatter. The same points are plotted on each panel. See color version of this figure at back of this issue.



**Figure 3.** Tracer-tracer scatter plots from the chemical transport model experiment of *Waugh et al.* [1997b]: (a) CFC-11: $\text{N}_2\text{O}$ , (b)  $\text{CH}_4$ : $\text{N}_2\text{O}$ , (c) CFC-113: $\text{N}_2\text{O}$ , and (d) CFC-12: $\text{N}_2\text{O}$ . Details are as for Figure 2. See color version of this figure at back of this issue.

is most sensitive to mixing between air masses with particular  $\text{N}_2\text{O}$  concentrations. For example, as can be seen from Figure 3, CFC-11: $\text{N}_2\text{O}$  changes most rapidly when air with  $[\text{N}_2\text{O}] > 130$  ppbv mixes with air that has  $[\text{N}_2\text{O}] < 130$

ppbv, for CFC-113, the CFC-113: $\text{N}_2\text{O}$  ratio is most sensitive to mixing around  $[\text{N}_2\text{O}] = 90$  ppbv, CFC-12, 50 ppbv and  $\text{CH}_4$ , 40 ppbv. The  $\text{NO}_y$ : $\text{N}_2\text{O}$  ratio is most sensitive to mixing in the range 40–50 ppbv, so it is perhaps not

surprising that CH<sub>4</sub> and CFC-12 are key components in most of the tracers cited above, with CFC-11 possibly the least important component in each case, which is why it can be dropped when defining Z. The advantages and disadvantages of using of CFC-12 as opposed to CFC-113 are discussed in the following section. Attempts to define a reference tracer without using CH<sub>4</sub> as one of the constituent species did not result in a reference tracer that was linear with NO<sub>y</sub> across much of the required range in N<sub>2</sub>O space.

[25] Comparing two locations with the same N<sub>2</sub>O mixing ratio (64 ppbv), one from the vortex and one from the midlatitudes, the vortex location has the lower NO<sub>y</sub> concentration (16.2 ppbv compared to 19.1 ppbv) due to mixing. However, the same mixing has also caused the vortex [CH<sub>4</sub>] to be lower (568 to 641 ppbv), making its [Y] value lower by 2.22. Mixing has also increased the vortex [CFC-113] relative to midlatitudes (8.24 pptv to 5.39 pptv) causing the vortex [Y] to be a further 0.78 lower. The higher [CFC-11] in the vortex has the reverse effect, adding 0.15 to [Y]. The contributions from each species ensure that [Y] = [NO<sub>y</sub>] both inside and outside the vortex, with the change in CH<sub>4</sub> the most important component in this example. However CH<sub>4</sub>, CFC-11, and CFC-113 make a more equal contribution to the change in [Y] when [N<sub>2</sub>O] = 120 ppbv.

#### 4. Application to POLARIS Data

[26] During the spring and summer of 1997 a series of ER-2 aircraft flights and several MkIV balloon flights were made into the Northern Hemisphere extratropical lower stratosphere during the Photochemistry of Ozone Loss in the Arctic Region in Summer (POLARIS) mission [Newman *et al.*, 1999]. Vortex remnants with low N<sub>2</sub>O concentrations (<150 ppbv) were encountered on several occasions during the mission at the ER-2 flight altitude, typically around 22 km, most notably on the flights of 26 April, 26 June, 29 June, and 30 June. Numerous species were measured by on-board instrumentation including NO<sub>y</sub>, N<sub>2</sub>O, O<sub>3</sub>, CH<sub>4</sub>, CFC-11, CFC-12, and CFC-113.

[27] The MkIV balloon flights (MkIV Fourier Transform Infrared (FTIR) Interferometer [Toon *et al.*, 1999]) we will examine occurred on 8 May, 8 July, and 9 July 1997 from Fairbanks, Alaska (64.5 N, 147 W). The balloon measurements are included as they extend up to a much greater altitude (38 km) compared with the aircraft data. We have concentrated on using measurements of N<sub>2</sub>O, CFC-12, CH<sub>4</sub>, and NO<sub>y</sub>. We use NO<sub>y</sub> calculated from the directly observed HNO<sub>3</sub>, NO, NO<sub>2</sub>, N<sub>2</sub>O<sub>5</sub>, ClONO<sub>2</sub>, and HNO<sub>4</sub> (see equation (1)).

[28] We make the same basic assumption about the treatment of the ER-2 and MkIV data sets as Rex *et al.* [1999], namely that two data sets can be compared directly without correction for systematic differences. Good agreement has been demonstrated between ER-2 and MkIV data for midlatitude NO<sub>y</sub> and N<sub>2</sub>O, [Sen *et al.*, 1998], and for N<sub>2</sub>O, NO<sub>y</sub>, CH<sub>4</sub> and CFC-12 [Toon *et al.*, 1999]. Measurement accuracies for each species [Toon *et al.*, 1999] are NO<sub>y</sub> (10%, 15%), N<sub>2</sub>O (2%, 5%), CH<sub>4</sub> (3%, 5%), CFC-11 (2%, 10%), CFC-12 (2%, 10%), and CFC-113 (3%, 20%), where the first number in brackets in each case is the ER-2 error and the second the MkIV error. We do not use MkIV CFC-

113 measurements in what follows because of the large bias between these and the ER-2 measurements [Toon *et al.*, 1999].

[29] Comparison of the ER-2 and the ATMOS data, discussed in section 4 below, is also given by Chang *et al.* [1996], for CH<sub>4</sub>, NO<sub>y</sub>, and N<sub>2</sub>O. Note that ATMOS data are obtained using a similar solar occultation method to MkIV data. The reader is referred to Rex *et al.* [1999] for further discussion of these issues. We choose the Airborne Chromatograph for Atmospheric Trace Species (ACATS) instrument [Elkins *et al.*, 1996] for our calculations involving ER-2 N<sub>2</sub>O and CH<sub>4</sub>, as this instrument is also used to simultaneously measure the CFCs.

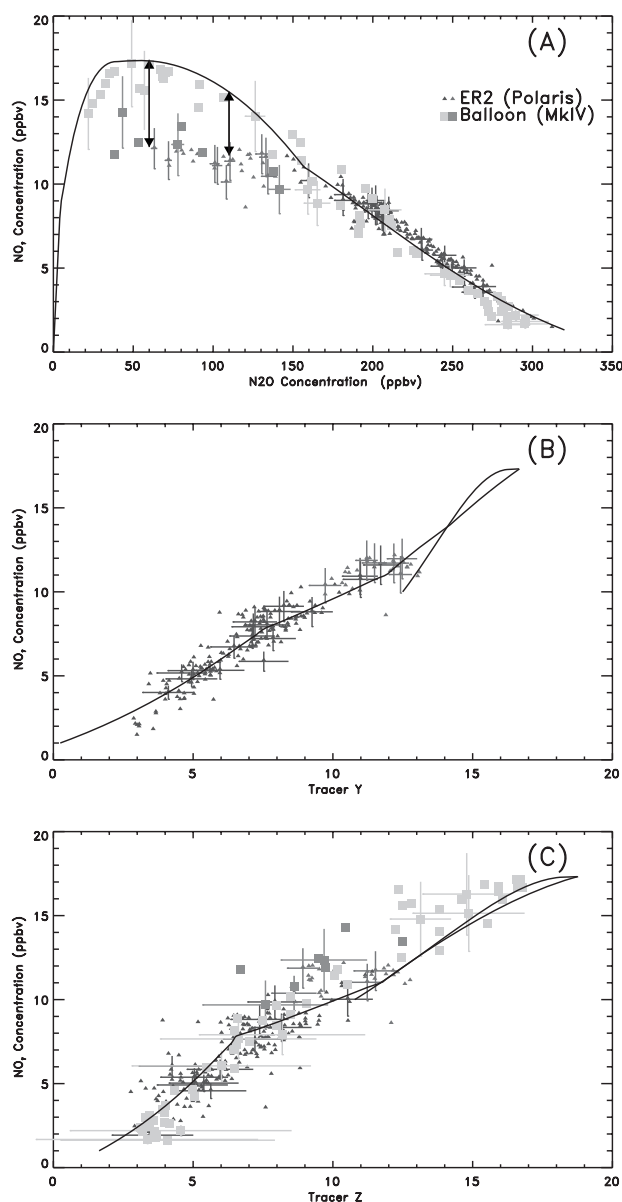
[30] Applying the reference tracer method described above to these data, we can make inferences about the degree of denitrification present in the air encountered during the above aircraft and balloon flights. Figure 4a shows the NO<sub>y</sub>:N<sub>2</sub>O scatter plot obtained from these data. The black curve denotes the midlatitude canonical correlation curve for these two species. The shape is identical to that given by Michelsen *et al.* [1998b] for ATLAS data but with some slight rescaling of axes to obtain a better fit to this different data. Balloon measurements are plotted as green and orange squares and aircraft measurements as blue and cyan triangles. The coloring has been chosen so that green and cyan points correspond to “apparently denitrified” air, i.e., air with N<sub>2</sub>O and NO<sub>y</sub> concentrations located significantly below the level of the midlatitude NO<sub>y</sub>:N<sub>2</sub>O canonical correlation. Orange and blue points denote samples of “typical” midlatitude air that lie on or near the canonical correlation curve.

[31] Figure 4b shows the aircraft data only, plotted as an NO<sub>y</sub>:Y scatter plot, where Y in this case is given by

$$[Y] = 0.0179[\text{CH}_4]_{\text{ppb}} + 0.040[\text{CFC-11}]_{\text{ppt}} + 0.187[\text{CFC-113}]_{\text{ppt}} + 0.0530[\text{N}_2\text{O}]_{\text{ppb}} + 4.9. \quad (7)$$

Note that it is necessary to use slightly different coefficients for Y compared with the CTM results above, because the CTM and observed canonical correlations differ fairly significantly. The black NO<sub>y</sub>:Y canonical correlation curve is nearly linear in the 3–300 ppbv [N<sub>2</sub>O] range. This means that mixing between air masses with initial N<sub>2</sub>O concentrations within this range will not lead to significant departures from this curve. Both the blue and cyan points lie close to the curve. This means that, as with the CTM data discussed above, the apparent denitrification of the air corresponding to the cyan points can be explained by mixing alone. It can be concluded that the ER2 has flown through filaments of old vortex air, that this air has undergone little or no denitrification, and that this air has mixed with midlatitude air. There is no way of telling from the Y framework whether the mixing has taken place as a single mixing event after the vortex has broken down (scenario A), or whether the vortex had previously undergone a series of mixing events with midlatitude air before breakup (scenario B). Our analysis is equally valid for both scenarios. PWC have argued in favor of scenario B for filaments observed after the 1992–1993 vortex breakup, by comparing vortex measurements during ATLAS (see below) with later





**Figure 4.** Tracer-tracer scatter plots of data collected during POLARIS (spring–summer 1997), including ER-2 and MkIV data: (a)  $\text{NO}_y:\text{N}_2\text{O}$ , (b)  $\text{NO}_y:\text{Y}$ , and (c)  $\text{NO}_y:\text{Z}$ . Small triangles correspond to ER-2 measurements and squares to MkIV measurements. Cyan and green correspond to “apparently denitrified” air in Figure 4a, and blue and orange to air with standard midlatitude correlations. Error bars showing the  $1\sigma$  accuracy of the measurements are included on some points. See the discussion in the text regarding the error bars on Y and Z. See color version of this figure at back of this issue.

aircraft measurements of filaments (during the SPADE campaign [Wofsy *et al.*, 1994]).

[32] Figure 4c shows similar results for  $\text{NO}_y:\text{Z}$ , where

$$[\text{Z}] = 0.0371[\text{CH}_4]_{\text{ppb}} + 0.0466[\text{CFC } 12]_{\text{ppt}} + 0.1[\text{N}_2\text{O}]_{\text{ppb}} + 5. \quad (8)$$

The  $\text{NO}_y:\text{Z}$  plot reveals a greater scatter than  $\text{NO}_y:\text{Y}$  (see discussion below), but it has the advantage that Z can also be calculated for the MkIV data. (Another advantage is that this correlation remains near linear up to  $[\text{N}_2\text{O}] = 1\text{--}2$  ppbv, meaning that the  $\text{NO}_y:\text{Z}$  correlation is relatively unaffected by mixing with air originating at higher levels compared with Y.) All the points on Figure 4c remain close to the canonical curve. Similar conclusions can therefore be drawn from Figure 4c as from Figure 4b, this time for both the ER-2 and the balloon data. The balloons have encountered layers of old vortex air at and above the height of the ER-2 flights, and the large deviations from the midlatitude  $\text{NO}_y:\text{N}_2\text{O}$  canonical correlation present these can again be accounted for by mixing alone. The greater scatter in this plot, however, means that the Z analysis can bound the level of possible denitrification to within only 1–2 ppbv or so.

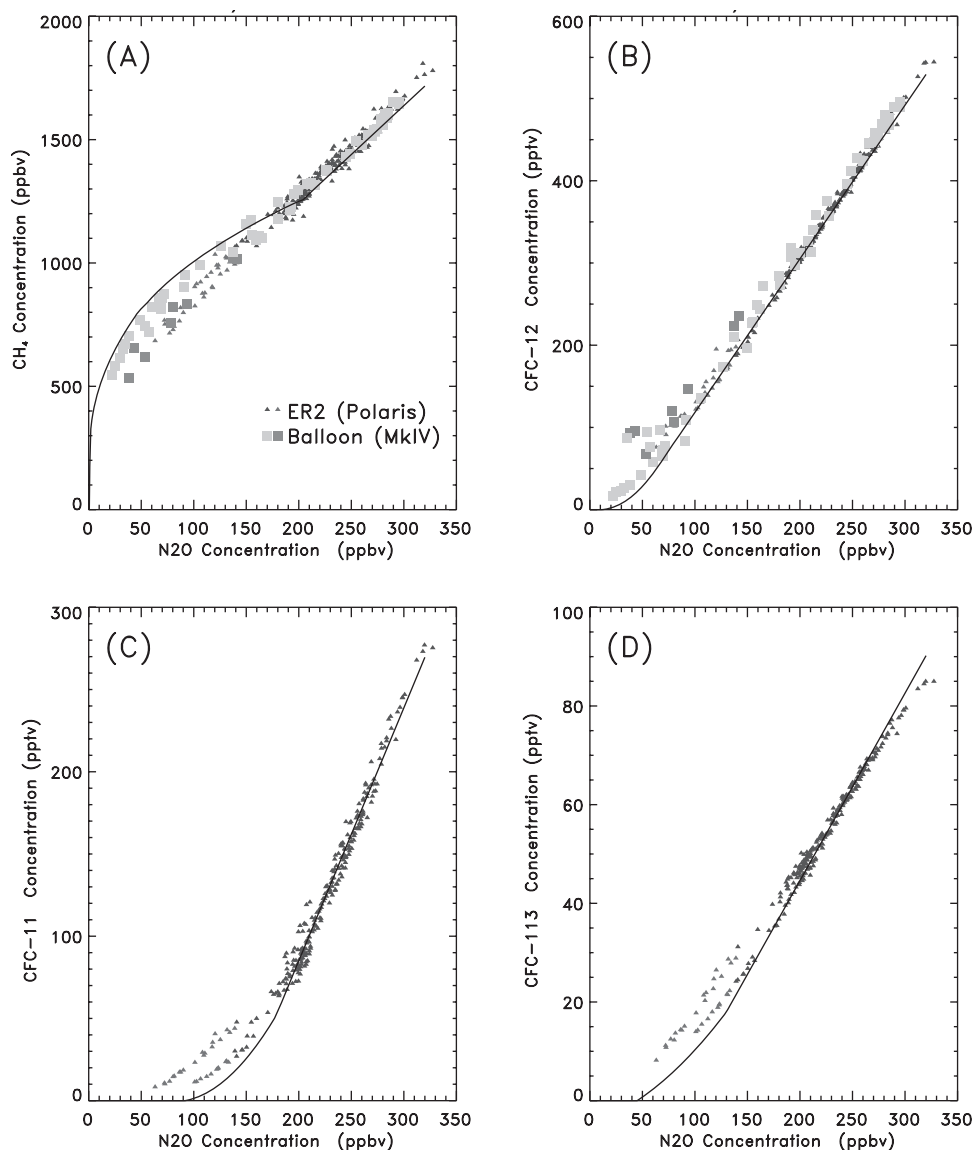
[33] Error bars on Figure 4 show the ( $1\sigma$ ) accuracy of the instruments measuring each species. For Y and Z the  $1\sigma$  error bars are calculated assuming that the errors associated with each component are independent. The error bars for the balloon measurements of Y and Z in particular are large, especially for low values, and this sensitivity is due to the large degree of cancellation between the  $[\text{CH}_4]$  and  $[\text{N}_2\text{O}]$  components of Y and Z at low values.

[34] Figure 3 shows scatterplots of ER-2 and MkIV measurements of each of the species used to calculate Y and Z. In the case of  $\text{CH}_4:\text{N}_2\text{O}$  the canonical relationship is a rescaled version of the polynomial fit given by Michelsen *et al.* [1998b]. In the case of the CFCs the canonical relationships plotted are linear fits to the midlatitude data in the lower stratosphere, matched to quadratic fits in the mid-upper stratosphere where the CFC concentrations decay to negligible concentrations. The color coding of the points allows some insight into why the reference tracer method has indicated that mixing (rather than denitrification) has taken place. Green and cyan points that correspond to measurements of old vortex apparently denitrified air appear, in nearly every case, on the mixing side of each canonical correlation (i.e., below the black curve in Plate 4A, and above the black curves in Figures 4b–4d). The orange and blue midlatitude samples lie on or near the curve. (The few points that are clear exceptions to this statement, mostly among the MkIV CFC-12 measurements, are responsible for the outlying points in Figure 4c.) The fact that the air represented by the cyan and green samples has undergone this mixing is reflected in the calculated values of Y and Z and is the reason that the cyan and green points remain near the canonical curves in Figures 4b and 4c.

[35] The vortex ER-2 measurements (cyan points) can be seen to lie on two separate lines in each of Figures 5a–5d, as well as in Figure 4c ( $\text{NO}_y:\text{N}_2\text{O}$ ). These correspond to separate flights, one in April, when the vortex was measured directly, and one in June when vortex remnants were measured. The June samples appear in each case to have undergone more mixing. When the same samples are plotted on the  $\text{NO}_y:\text{Y}$  plot the April and June measurements converge near the canonical curve, again illustrating the ability of the reference tracer method to account for different degrees of mixing.

[36] In summary the advantage of Z over Y turns out to be that it is easier to construct a tracer that is linear over a greater range in altitude (or equivalently  $\text{N}_2\text{O}$  space) for Z compared with Y. However, the disadvantage with Z is that,





**Figure 5.** Tracer-tracer scatter plots from POLARIS: (a) CH<sub>4</sub>:N<sub>2</sub>O, (b) CFC-12:N<sub>2</sub>O, (c) CFC-11:N<sub>2</sub>O, and (d) CFC-113:N<sub>2</sub>O. Details as Figure 4. See color version of this figure at back of this issue.

comparing Figures 5b and 5d, the difference in the CFC-12:N<sub>2</sub>O ratio between vortex and midlatitude air is small compared with CFC-113:N<sub>2</sub>O. This means that NO<sub>y</sub>:Z is more sensitive to scatter caused by (say) instrument error in measuring CFC-12 compared with NO<sub>y</sub>:Y, which explains why there is greater scatter and larger error bars in Figure 4c compared with Figure 4b.

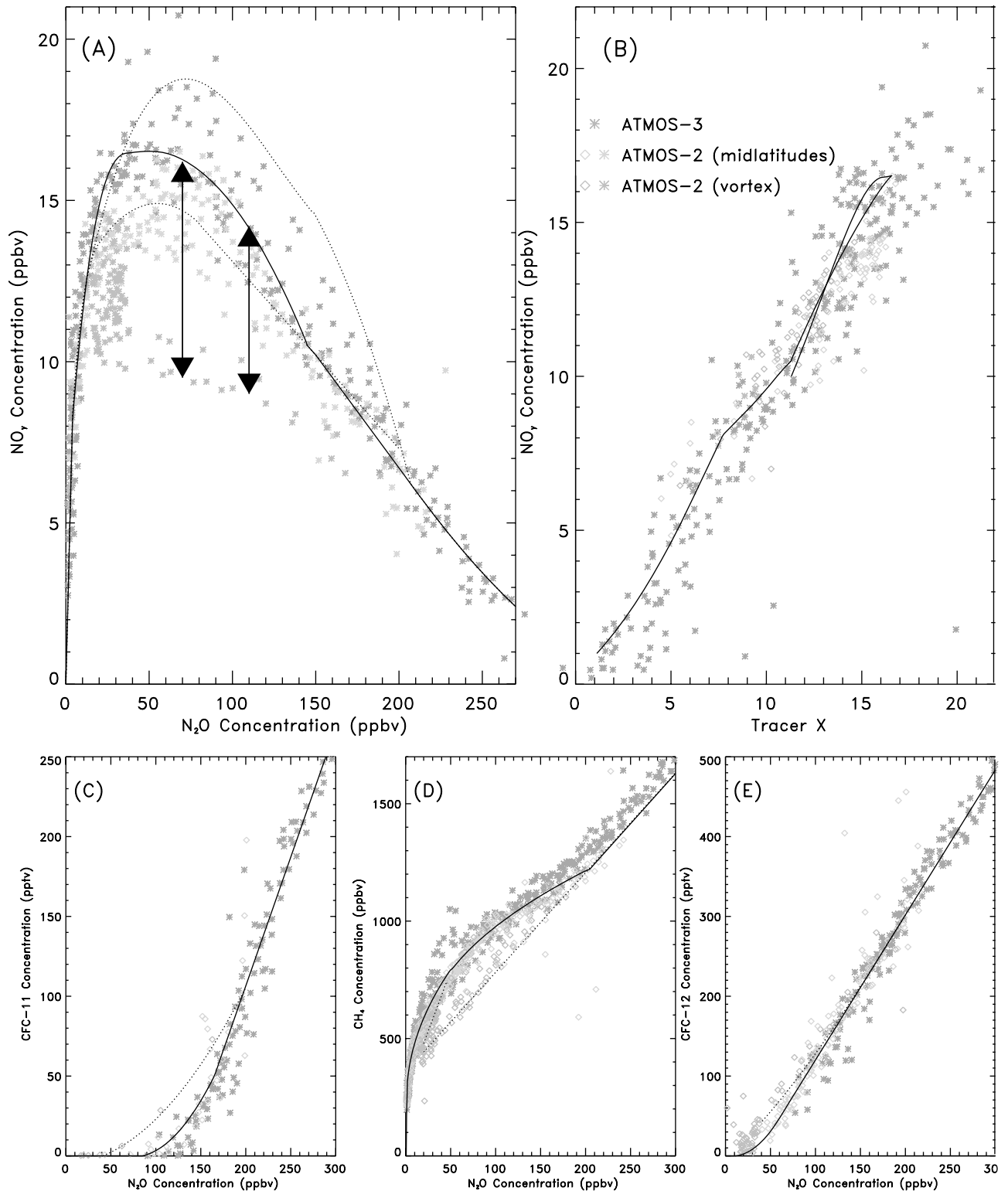
[37] These results provide a robust confirmation of the assertion by Kondo *et al.* [1999] that the NO<sub>y</sub>:N<sub>2</sub>O measurements made in the ex-vortex air during this winter can be explained by mixing alone. However, as explained in Kondo *et al.* [2000], satellite measurements showed that some denitrification did occur in the vortex, although much earlier than the POLARIS measurements (February 1997).

## 5. Application to ATLAS Data

[38] During the Atmospheric Laboratory for Applications and Science (ATLAS) shuttle missions, the Atmospheric

Trace Molecule Spectroscopy (ATMOS) instrument [Michelsen *et al.*, 1998a, 1998b], was used to measure long-lived tracers in the northern hemisphere extratropical stratosphere during April 1993 (ATLAS-2) and November 1994 (ATLAS 3). Occultations during ATLAS 2 included measurements made inside the late winter vortex, identifiable from vertical profiles with unusually low N<sub>2</sub>O in the midstratosphere, as well as measurements made in the midlatitudes. During ATLAS 3, similar midlatitude profiles were obtained as the Arctic vortex formed at the beginning of the 1994–1995 winter. We will use these latter data to help form standard midlatitude profiles for our reference tracer. Michelsen *et al.* [1998b] give the instrument accuracy for ATMOS to be 5% for N<sub>2</sub>O and CH<sub>4</sub>, and 6–16% for NO<sub>y</sub>, depending on altitude, and Abrams *et al.* [1996a] quote 11% accuracy for CFC-11 and 9% accuracy for CFC-12.

[39] Figure 6 shows the reference tracer method applied to the ATLAS data. The canonical correlations shown are the ATLAS midlatitude fits given by Michelsen *et al.*



**Figure 6.** Tracer-tracer scatter plots of data collected during ATLAS 2 and ATLAS 3 (1993–1994): (a) NO<sub>y</sub>:N<sub>2</sub>O, (b) NO<sub>y</sub>:X, (c) CFC-11:N<sub>2</sub>O, (d) CH<sub>4</sub>:N<sub>2</sub>O, and (e) CFC-12:N<sub>2</sub>O. Red points correspond to ATLAS 3 data, green to ATLAS 2 midlatitude and blue to ATLAS 2 vortex data. The diamonds and stars in Figure 6b correspond to different ways of estimating X as described in the text. The dotted lines in Figure 6a are the (top) tropical and (bottom) protovortex canonical relationships [Michelsen *et al.*, 1998b]. See color version of this figure at back of this issue.

[1998b] and the CFC canonical relationships are linear/quadratic fits as in Figure 4. The  $\text{NO}_y:\text{N}_2\text{O}$  scatter plot (Figure 6a) once again indicates apparent denitrification of the vortex measurements. If a reference tracer is used (Figure 6b), this time called X as CFC-11 and CFC-12 are both used

$$[\text{X}] = 0.0271[\text{CH}_4]_{\text{ppb}} + 0.0195[\text{CFC-11}]_{\text{ppt}} + 0.0344[\text{CFC-12}]_{\text{ppt}} + 0.0750[\text{N}_2\text{O}]_{\text{ppb}} + 0.05. \quad (9)$$

we see instead that both vortex (blue points) and midlatitude (green points, ATLAS 2; red points, ATLAS 3) observations fall close to the near linear midlatitude canonical relationship illustrated by the black curve. This is again strongly indicative that little or no denitrification has taken place during the winter 1992–1993 and that the apparent denitrification in Figure 6a is due to mixing. Error bars are omitted from this plate to avoid cluttering but are of a similar magnitude to the MkIV error bars shown on Figures 4a and 4c. Figures 6c–6e show the measurements of the species making up X.

[40] The relative lack of simultaneous measurements of all four tracer X species in the ATLAS 2 data means, however, that some significant approximations were necessary in the construction of Figure 6b. Green and blue points marked by diamonds indicate that  $\text{N}_2\text{O}$  and  $\text{CH}_4$  measurements were used to calculate X, but the remaining species were approximated by  $[\text{CFC-11}]^c$  and  $[\text{CFC-12}]^c$ , respectively. Here  $[\text{CFC-11}]^c$  and  $[\text{CFC-12}]^c$  have been estimated from measured  $[\text{N}_2\text{O}]$  using the standard midlatitude canonical correlations (solid black curves in Figures 6c and 6e) for the midlatitude measurements (green points), and vortex canonical correlations (dotted black curves in Figures 6c and 6e) for the vortex measurements (blue points). By contrast, green and blue stars indicate that  $[\text{N}_2\text{O}]^c$ ,  $[\text{CFC-11}]^c$ , and  $[\text{CFC-12}]^c$  have been used along with  $[\text{CH}_4]^c$ . No such approximations were necessary for the ATLAS 3 data (red points).

[41] The use of the above approximations means that it is difficult to place a bound on the accuracy of the reference tracer method for this winter. It is possible that some denitrification (1–3 ppbv) may have occurred in some of the air encountered, but that this is not detectable owing to inaccuracy in the calculation of [X]. However it is notable from Figures 6c–6e that the vortex measurements of CFC-11: $\text{N}_2\text{O}$ ,  $\text{CH}_4:\text{N}_2\text{O}$ , and CFC-12: $\text{N}_2\text{O}$  nearly all lie on the mixing side of the midlatitude canonical correlation, just as with the CTM, POLARIS, and MkIV data (although there were very few ATLAS vortex measurements of CFC-11). This further supports the conclusion from the reference tracer method, also suggested by Michelsen *et al.* [1998b], that the vortex measurements of  $\text{NO}_y:\text{N}_2\text{O}$  during this winter can be explained by mixing alone.

[42] Figure 7a shows the  $\text{NO}_y:\text{N}_2\text{O}$  relationship during ATLAS 3 (November 1994) in the Southern Hemisphere. As the Antarctic vortex is colder than the Arctic, extensive denitrification takes place every year [Michelsen *et al.*, 1998b]. Consistent with this, ATLAS 3 vortex measurements made entirely within the vortex (blue points), typically have very low values of  $[\text{N}_2\text{O}]$  (2–5 ppbv). Midlatitude samples (red points) follow a relationship similar to the northern hemisphere canonical relationship.

It is clear from the vertical  $\text{N}_2\text{O}$  profiles that the green points that remain are derived from occultations that intersect the vortex edge at some altitude. Some of these points lie on the midlatitude relationship, while the rest show various degrees of apparent denitrification.

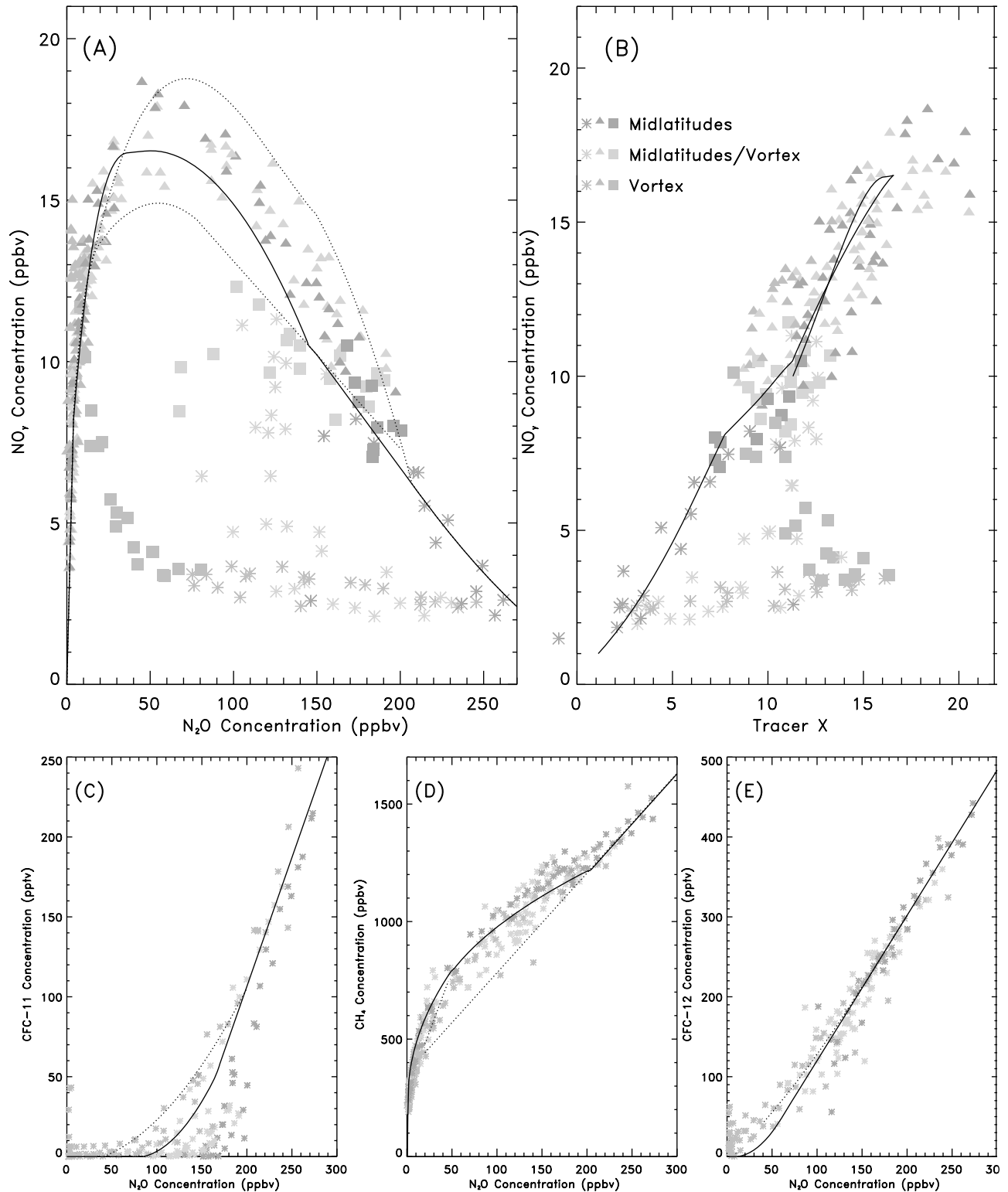
[43] Figure 7b shows the  $\text{NO}_y:\text{X}$  relationship. Here X is identical to equation (9) above. Note that the measurements in Figures 7a and 7b are further subdivided into measurements made below 19 km (stars), 19–23 km (squares), and above 23 km (triangles). It is notable that all the blue stars and squares lie significantly below the midlatitude  $\text{NO}_y:\text{X}$  relationship, marked out by all red points plus the green triangles. This confirms that the vortex occultations have measured air that is clearly denitrified up to 23 km, albeit by slightly less than is apparent from the  $\text{NO}_y:\text{N}_2\text{O}$  plot. Similarly, most vortex edge measurements below 19 km (green stars) also show denitrified air. However, between 19 and 23 km (green squares) these occultations have mostly measured air that appears denitrified on the  $\text{NO}_y:\text{N}_2\text{O}$  plot, but not on the  $\text{NO}_y:\text{X}$  plot. This appears to be another example of apparent denitrification due to mixing.

[44] Figures 7c–7e contain further evidence that mixing into the vortex plays a role in the Southern Hemisphere. In each panel it is clear that the vortex measurements (blue points) lie to the mixing side of the midlatitude relationship defined by the red points. As with the  $\text{NO}_y$  measurements, some green points have midlatitude characteristics and some vortex characteristics. The evidence for mixing is particularly clear in the CFC-11 plot, where vortex air with relatively low  $[\text{N}_2\text{O}]$  values (50–100 ppbv) has significant levels of CFC-11 (10–20 pptv). This CFC-11 would be entirely absent if mixing of vortex and high  $\text{N}_2\text{O}$  midlatitude air had not occurred. This mixing is accounted for in Figure 5b and results in lower [X] and therefore lower calculated loss of  $\text{NO}_y$ .

## 6. Discussion and Conclusions

[45] Given simultaneous measurements of  $\text{NO}_y$  and several long-lived species in (ex)-Arctic vortex air, we have described a method of obtaining a quantitative estimate of denitrification, even in the case where the vortex air has undergone a series of unknown mixing events with midlatitude air. The method depends on creating a reference tracer, defined as a linear combination of long-lived species, that has a near-linear canonical relationship with  $\text{NO}_y$  in midlatitude air. Assuming that at the beginning of the winter the vortex air also has this near-linear relationship, mixing between descending vortex air and midlatitude air will not cause significant departure from this relationship. Denitrification can be quantified as the difference between  $[\text{NO}_y]$  and  $[\text{NO}_y]$  measured in the vortex, where  $[\text{NO}_y]$  is the expected concentration of  $[\text{NO}_y]$  at a fixed value of the reference tracer.

[46] Applying this method to measurements made during the relatively warm winters of 1992–1993 and 1996–1997 our results have reinforced the arguments of Michelsen *et al.* [1998b], for the 1992–1993 winter, and Kondo *et al.* [1999] for the 1996–1997 winter, that deviations from the standard midlatitude  $\text{NO}_y:\text{N}_2\text{O}$  relationship can be accounted for by mixing alone. It is worth noting that Kondo *et al.* [2000] have shown using satellite measurements that significant



**Figure 7.** As Figure 6 but showing ATLAS 3 data measured in the Southern Hemisphere in November 1994: (a)  $NO_y:N_2O$ , (b)  $NO_y:X$ , (c) CFC-11: $N_2O$ , (d)  $CH_4:N_2O$ , and (e) CFC-12: $N_2O$ . In this plot, red points correspond to occultations measuring midlatitude air and blue points to vortex air. Green points indicate that the occultation intersects the vortex edge. In Figures 7a and 7b, stars indicate measurements below 19 km, squares 19–23 km and triangles measurements from above 23 km. See color version of this figure at back of this issue.

denitrification did take place in other regions of the vortex during February 1997. One or two balloon flights also described by *Kondo et al.* [1999] did pass briefly through air that they argued was denitrified. This method might have offered a way of quantifying this denitrification had more long-lived species been measured concurrently.

[47] Finally, it is worth discussing the possible application of this method, or some variation on it, to quantify chemical ozone loss in the Arctic. Some further problems must be overcome to achieve this. At the beginning of the winter the chemical timescale for ozone in midlatitudes is too short for compact relationships to form between it and longer-lived species (see Plumb and Ko's condition (2) above). Compact relationships do form during the winter [Proffitt *et al.*, 1990; Müller *et al.*, 1996, 1997] but are likely to be different inside and outside of the polar vortex. If account is taken of these initially different relationships, and some midwinter vortex measurements are available to compare with later measurements during or after vortex breakup, then an analysis of the type described in this paper might be worthwhile.

## Appendix A: Determining the Tracer Coefficients

[48] Our method for determining the tracer coefficients is as follows. First, the canonical correlations, which are fits to the compact relationships between long-lived tracers, are all expressed as a function of the concentration of the same species, in our case  $[\text{N}_2\text{O}]$ . As  $\text{NO}_y$  has a maximum in the midstratosphere, it is helpful at this point to define  $[\text{N}_2\text{O}]_M$  as the concentration of  $\text{N}_2\text{O}$  that corresponds to the maximum concentration of  $\text{NO}_y$ , defined as  $[\text{NO}_y]_M$ .

[49] Next, to obtain coefficients for a reference tracer made up of four species  $\chi_1$ – $\chi_4$  (representing, e.g.,  $\text{N}_2\text{O}$ ,  $\text{CH}_4$ , CFC-11, CFC-113), we solve the five simultaneous equations:

$$\begin{aligned} a[\chi_1]_1 + b[\chi_2]_1 + c[\chi_3]_1 + d[\chi_4]_1 + e &= [\text{NO}_y]_1, \\ a[\chi_1]_2 + b[\chi_2]_2 + c[\chi_3]_2 + d[\chi_4]_2 + e &= [\text{NO}_y]_2, \\ a[\chi_1]_3 + b[\chi_2]_3 + c[\chi_3]_3 + d[\chi_4]_3 + e &= [\text{NO}_y]_3, \\ a[\chi_1]_4 + b[\chi_2]_4 + c[\chi_3]_4 + d[\chi_4]_4 + e &= [\text{NO}_y]_4, \\ a[\chi_1]_M + b[\chi_2]_M + c[\chi_3]_M + d[\chi_4]_M + e &= [\text{NO}_y]_M, \end{aligned} \quad (10)$$

for  $a$ ,  $b$ ,  $c$ ,  $d$  and  $e$ . This set of simultaneous equations can be solved using a standard matrix inversion method. The subscripts denote evaluation at different points in tracer space in the region of interest, i.e., if all the canonical correlations are initially functions of  $[\chi_1]$ – $[\text{N}_2\text{O}]$  the subscript 1 might correspond to evaluation at  $[\text{N}_2\text{O}] = 50$  ppbv, and subscript 2 to evaluation at  $[\text{N}_2\text{O}] = 80$  ppbv etc., so that for example  $[\chi_i]_1 = [\chi_i](\text{N}_2\text{O} = 50 \text{ ppbv})$  and  $[\text{NO}_y]_1 = [\text{NO}_y](\text{N}_2\text{O} = 50 \text{ ppbv})$ . The subscript M refers to the evaluation at that value of  $[\text{N}_2\text{O}]$  for which  $[\text{NO}_y]$  is at a maximum.

[50] This process forces the  $\text{NO}_y$ : $\mathcal{X}$  canonical relationship, where

$$\mathcal{X} = a_{\chi_1} + b_{\chi_2} + c_{\chi_3} + d_{\chi_4} + e,$$

to pass through five points ( $[\mathcal{X}]_1$ ,  $[\text{NO}_y]_1$ ), ( $[\mathcal{X}]_2$ ,  $[\text{NO}_y]_2$ ), ( $[\mathcal{X}]_3$ ,  $[\text{NO}_y]_3$ ), ( $[\mathcal{X}]_4$ ,  $[\text{NO}_y]_4$ ), and ( $[\mathcal{X}]_M$ ,  $[\text{NO}_y]_M$ ) that lie

on the straight line  $[\text{NO}_y] = [\mathcal{X}]$ . We are free to choose five values of  $[\text{N}_2\text{O}]$  to evaluate the simultaneous equations (10), that result in the best fit to this straight line for the entire  $\text{NO}_y$ : $\mathcal{X}$  canonical relationship. There is no guarantee that a good fit is possible, it just happens to be the case for the combinations of tracers used in this paper. In equation (10) we have included the  $[\text{N}_2\text{O}]_M$ , the value corresponding to the maximum value of  $[\text{NO}_y]$ , as one of the points chosen. This forces the rightmost point on the  $\text{NO}_y$ : $\mathcal{X}$  canonical relationship, with the maximum value of  $[\text{NO}_y]$ , to lie on the straight line. For the remaining choices of  $[\text{N}_2\text{O}]$ , corresponding to subscripts 1–4, it is important that some are less than  $[\text{N}_2\text{O}]_M$  and some are greater than  $[\text{N}_2\text{O}]_M$ . This is necessary to force both branches of the double valued  $\text{NO}_y$ : $\mathcal{X}$  relationship to pass through the straight line. Note also that with these choices we do not force  $[\mathcal{X}]$ – $[\text{NO}_y] = 0$  at  $[\text{N}_2\text{O}] = 0$ . This is because we are interested in mixing in the range  $2 \text{ ppbv} < [\text{N}_2\text{O}] < 300 \text{ ppbv}$ , and with a limited number of tracers to make up our  $\mathcal{X}$  it is more important that the  $\text{NO}_y$ : $\mathcal{X}$  relationship is linear in the region where we believe mixing will occur, as opposed to the range  $0 \text{ ppbv} < [\text{N}_2\text{O}] < 2 \text{ ppbv}$ . However, as discussed in section 2,  $\mathcal{X}$  will be more useful if the  $\text{NO}_y$ : $\mathcal{X}$  relationship remains near linear for as great a range of  $[\text{N}_2\text{O}]$  as possible.

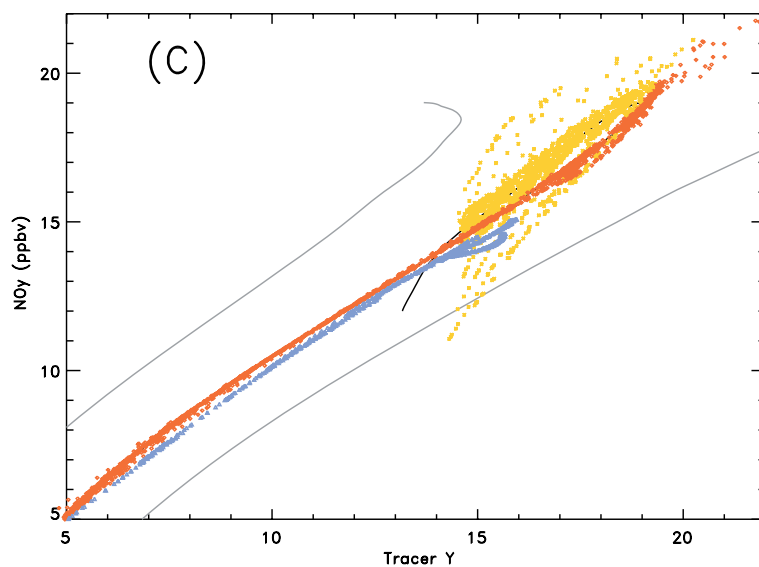
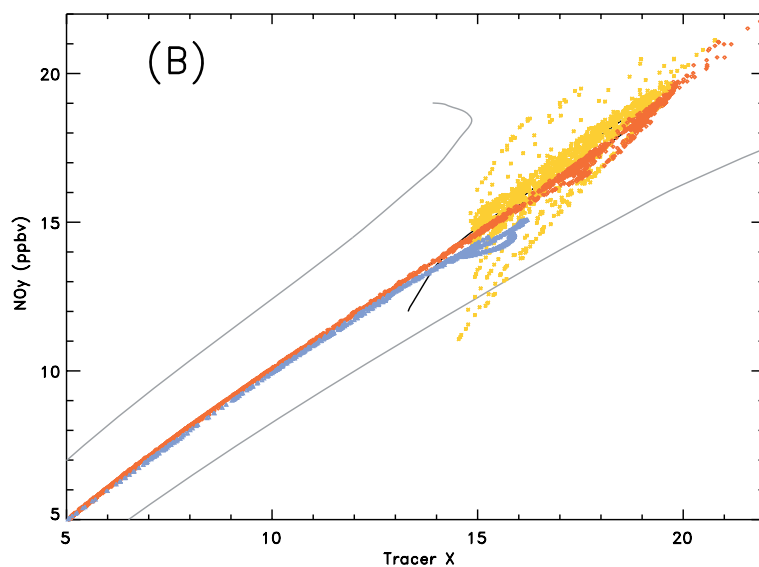
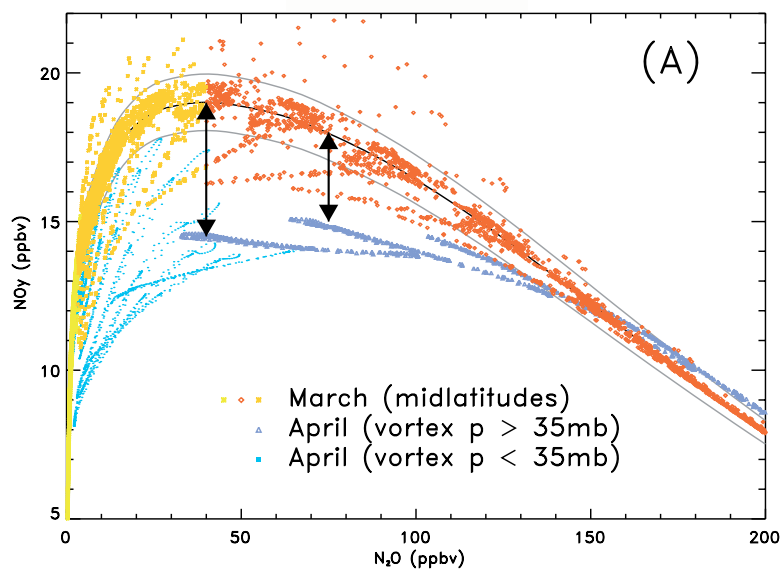
[51] By including more tracers to make up  $\mathcal{X}$ , we can make the  $\text{NO}_y$ : $\mathcal{X}$  canonical curve pass through more points on the  $[\text{NO}_y] = [\mathcal{X}]$  straight line ( $n$  tracers  $\rightarrow n + 1$  points). Therefore, in principle, the more simultaneous measurements of different species are available, the straighter the  $\text{NO}_y$ : $\mathcal{X}$  canonical relationship can potentially become. However, if one of the tracers has an entirely linear relationship with another (e.g.,  $\chi_2 = k\chi_1$ ) then the system of simultaneous equations (10) will become degenerate and therefore unsolvable. This is because in this case  $\chi_1$ : $\chi_2$  is unaffected by mixing, and therefore no new information about mixing is included by using both  $\chi_1$  and  $\chi_2$  to derive  $\mathcal{X}$ . Problems naturally arise in determining the constants  $a$ – $e$  if any two of the tracers used are near to having a linear relationship with each other. For the purposes of this paper, we have made small adjustments to  $a$ – $e$  in order to obtain the best possible fit to a straight line over the entire range of interest.

[52] **Acknowledgments.** The authors would like to acknowledge Hope Michelsen and Alan Plumb for their insightful comments on an earlier version of this manuscript.

## References

- Abrams, M. C., et al., On the assessment and uncertainty of atmospheric trace gas burden measurements with high resolution infrared solar occultation spectra from space by the ATMOS experiment, *Geophys. Res. Lett.*, 23, 2337–2340, 1996a.
- Abrams, M. C., et al., Trace gas transport in the Arctic vortex inferred from ATMOS ATLAS-2 observations during April 1993, *Geophys. Res. Lett.*, 23, 2345–2348, 1996b.
- Bauer, R., et al., Monitoring the vertical structure of the Arctic polar vortex over northern Scandinavia during EASOE, *Geophys. Res. Lett.*, 13, 1211–1214, 1994.
- Chang, A. Y., et al., A comparison of measurements from ATMOS and instruments aboard the ER-2 aircraft: Tracers of atmospheric transport, *Geophys. Res. Lett.*, 23, 2389–2392, 1996.
- Elkins, J. W., et al., Airborne gas chromatograph for in-situ measurements of long-lived species in the upper troposphere and lower stratosphere, *Geophys. Res. Lett.*, 23, 347–350, 1996.
- Fahey, D. W., K. K. Kelly, S. R. Kawa, A. F. Tuck, M. Loewenstein, K. R. Chan, and L. E. Heidt, Observations of denitrification and dehydration in the winter polar stratosphere, *Nature*, 344, 321–324, 1990.

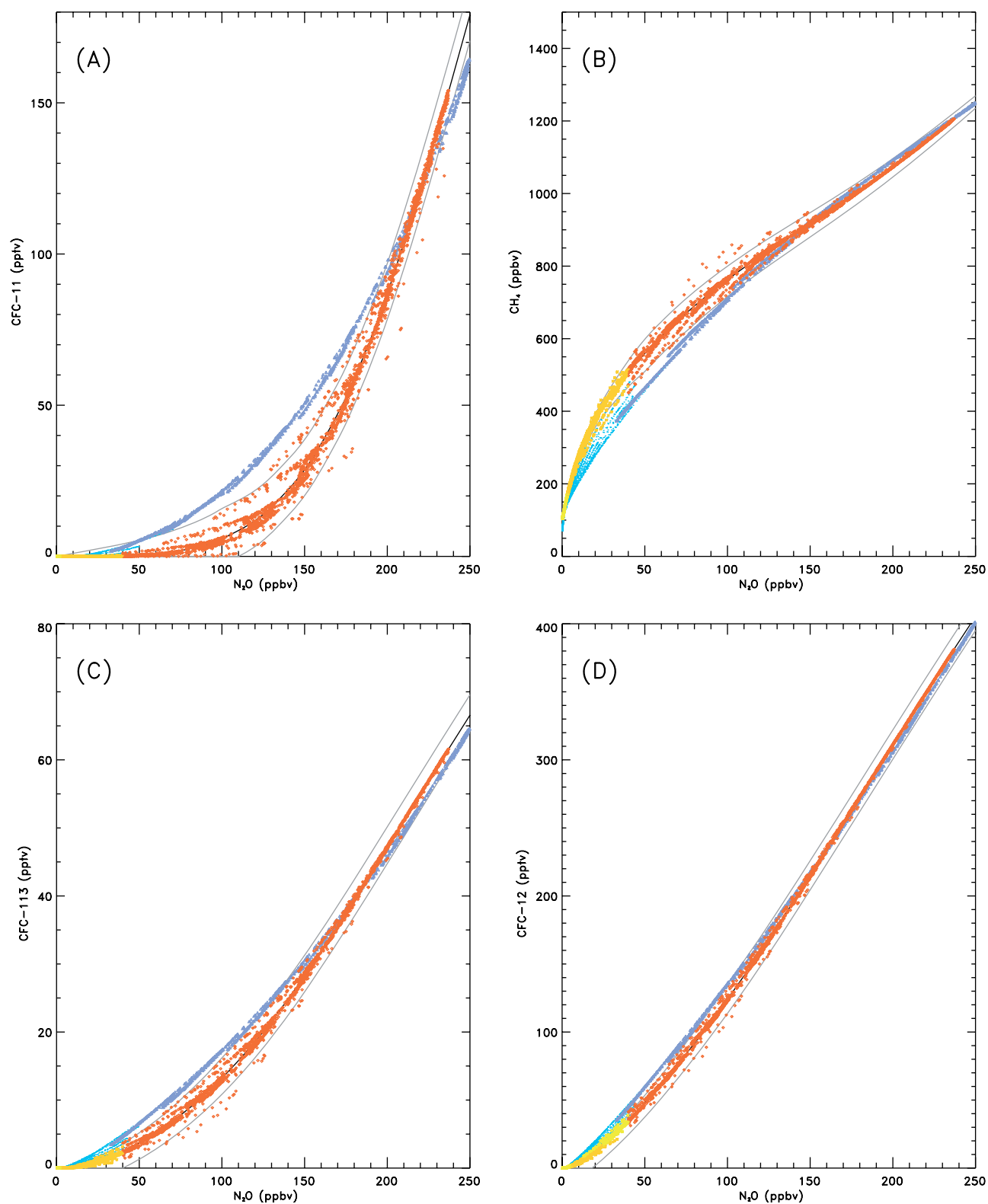
- Kondo, Y., et al.,  $\text{NO}_y$ - $\text{N}_2\text{O}$  correlation inside the Arctic vortex in February 1997: Dynamical and chemical effects, *J. Geophys. Res.*, **104**, 8215–8224, 1999.
- Kondo, Y., H. Irie, M. Koike, and G. E. Bodeker, Denitrification and nitrification in the Arctic stratosphere during the winter of 1996–1997, *Geophys. Res. Lett.*, **27**, 337–340, 2000.
- Michelsen, H. A., G. L. Manney, M. R. Gunson, C. P. Rinsland, and R. Zander, Correlations of stratospheric abundances of  $\text{CH}_4$  and  $\text{N}_2\text{O}$  derived from ATMOS measurements, *Geophys. Res. Lett.*, **25**, 2777–2780, 1998a.
- Michelsen, H. A., G. L. Manney, M. R. Gunson, and R. Zander, Correlations of stratospheric abundances of  $\text{NO}_y$ ,  $\text{O}_3$ ,  $\text{N}_2\text{O}$  and  $\text{CH}_4$  derived from ATMOS measurements, *J. Geophys. Res.*, **103**, 28,347–28,359, 1998b.
- Michelsen, H. A., et al., Intercomparison of ATMOS, SAGE II, and ER-2 observations in Arctic vortex and extra-vortex air masses during spring 1993, *Geophys. Res. Lett.*, **26**, 291–294, 1999.
- Müller, R., P. J. Crutzen, J.-U. Groöf, C. Brühl, J. M. Russell III, and A. F. Tuck, Chlorine activation and ozone depletion in the Arctic vortex: Observations by the Halogen Occultation Experiment on the Upper Atmosphere Research Satellite, *J. Geophys. Res.*, **101**, 12,531–12,554, 1996.
- Müller, R., J.-U. Groöf, D. S. McKenna, P. J. Crutzen, C. Brühl, J. M. Russell III, and A. F. Tuck, HALOE observations of the vertical structure of chemical ozone depletion in the Arctic vortex during winter and early spring 1996–1997, *Geophys. Res. Lett.*, **24**, 2717–2720, 1997.
- Newman, P. A., et al., Preface - Photochemistry and ozone loss in the Arctic region in summer (POLARIS), *J. Geophys. Res.*, **104**, 26,481–26,495, 1999.
- Plumb, R. A., A tropical pipe model of stratospheric transport, *J. Geophys. Res.*, **101**, 3957–3972, 1996.
- Plumb, R. A., and M. K. W. Ko, Interrelationships between mixing ratios of long lived stratospheric constituents, *J. Geophys. Res.*, **97**, 10,145–10,156, 1992.
- Plumb, R. A., D. W. Waugh, and M. P. Chipperfield, The effects of mixing on tracer relationships in the polar vortices, *J. Geophys. Res.*, **105**, 10,047–10,062, 2000.
- Proffitt, M. H., et al., Ozone loss in the Arctic polar vortex inferred from high altitude aircraft measurements, *Nature*, **347**, 31–36, 1990.
- Rex, M., et al., Subsidence, mixing and denitrification of arctic polar vortex air measured during POLARIS, *J. Geophys. Res.*, **104**, 26,611–26,623, 1999.
- Rinsland, C. P., et al., Polar stratospheric descent of  $\text{NO}_y$  and CO and Arctic denitrification during winter 1992–1993, *J. Geophys. Res.*, **104**, 1847–1861, 1999.
- Schmidt, U., et al., Profile observations of long-lived trace gases in the Arctic Vortex, *Geophys. Res. Lett.*, **18**, 767–770, 1991.
- Sen, B., G. C. Toon, G. B. Osterman, J.-F. Blavier, J. J. Margitan, and R. J. Salawitch, Measurements of reactive nitrogen in the stratosphere, *J. Geophys. Res.*, **103**, 3571–3585, 1998.
- Tabazadeh, A., M. L. Santee, M. Y. Danilin, H. C. Pumphrey, P. A. Newman, P. J. Hamill, and J. L. Mergenthaler, Quantifying denitrification and its effect on ozone recovery, *Science*, **288**, 1407–1411, 2000.
- Toon, G. C., et al., Comparison of MkIV and ER-2 aircraft measurements of atmospheric trace gases, *J. Geophys. Res.*, **104**, 26,779–26,790, 1999.
- Waibel, A. E., et al., Arctic ozone loss due to denitrification, *Science*, **283**, 2064–2069, 1999.
- Waugh, D. W., et al., Mixing of polar vortex air into middle latitudes as revealed by tracer-tracer scatterplots, *J. Geophys. Res.*, **102**, 13,119–13,134, 1997a.
- Waugh, D. W., et al., Three-dimensional simulations of long-lived tracers using winds from MACCM2, *J. Geophys. Res.*, **102**, 21,493–21,513, 1997b.
- Wofsy, S. C., R. Cohen, and A. Schmeltkeopf, Overview: The Stratospheric Photochemistry Aerosols and Dynamics Expedition (SPADE) and Airborne Arctic Stratospheric Expedition II (AASE II), *Geophys. Res. Lett.*, **21**, 2535–2539, 1994.
- J. G. Esler, Department of Mathematics, University College London, Gower Street London, WC1E 6BT, England. (gavin@math.ucl.ac.uk)
- D. W. Waugh, Department of Earth and Planetary Sciences, Johns Hopkins University, Baltimore, Maryland 21218, USA. (waugh@rupa.eps.jhu.edu)



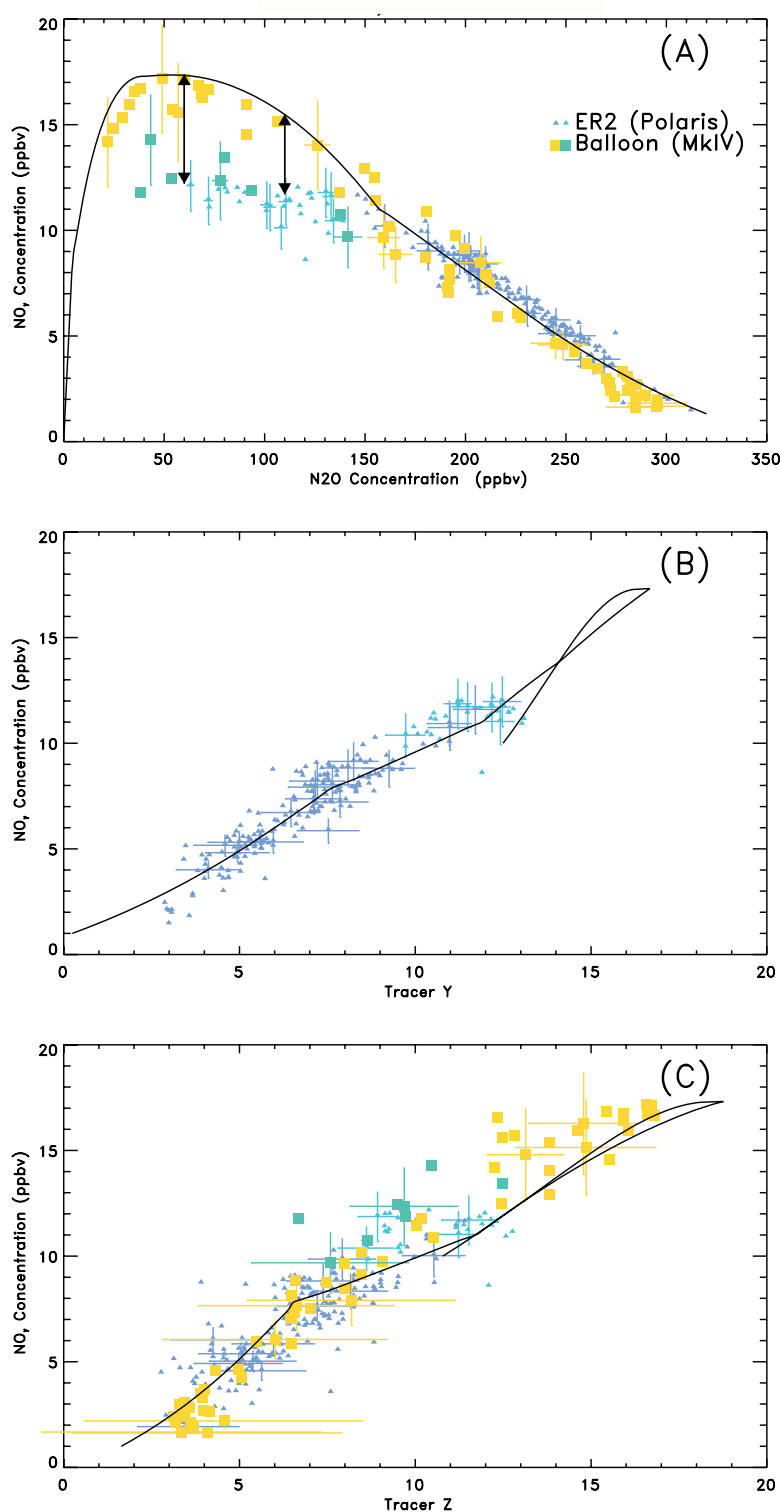


---

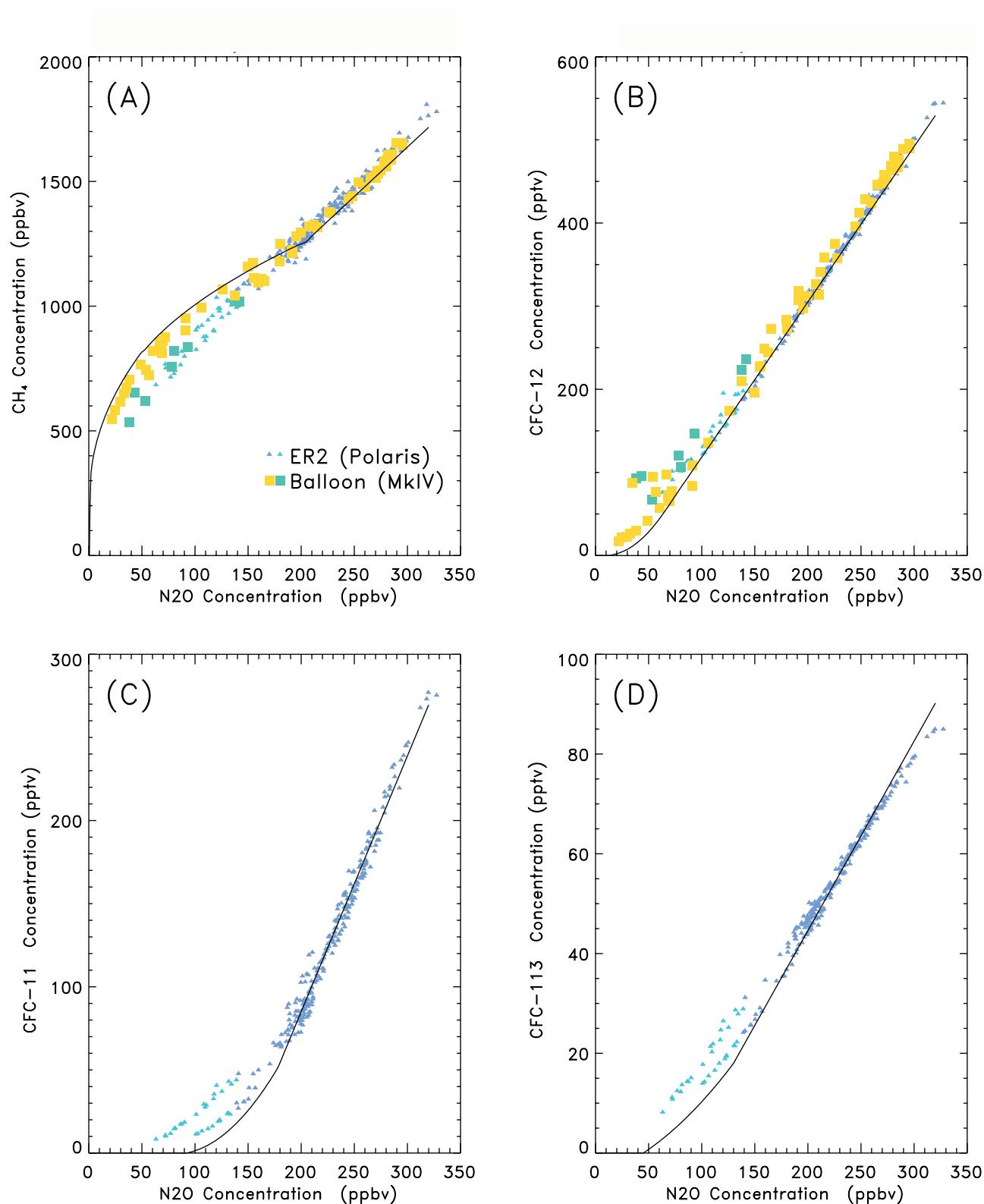
**Figure 2.** (opposite) Tracer-tracer scatterplots from the chemical transport model experiment of *Waugh et al.* [1997b]: (a)  $\text{NO}_y:\text{N}_2\text{O}$ , (b)  $\text{NO}_y:\text{X}$ , and (c)  $\text{NO}_y:\text{Y}$ . The yellow-orange-red points are typical midlatitude samples from 1 March, (yellow,  $[\text{N}_2\text{O}] < 6$  ppbv; orange,  $6 \text{ ppbv} < [\text{N}_2\text{O}] < 40$  ppbv; red,  $[\text{N}_2\text{O}] > 40$  ppbv). The cyan-blue points are vortex measurements from 1 April (cyan,  $p < 35$  mbar; blue,  $p > 35$  mbar). The black arrows in Figure 2a indicate “apparent denitrification.” Standard midlatitude canonical correlations are plotted as black curves and grey curves mark bounds on the scatter. The same points are plotted on each panel.



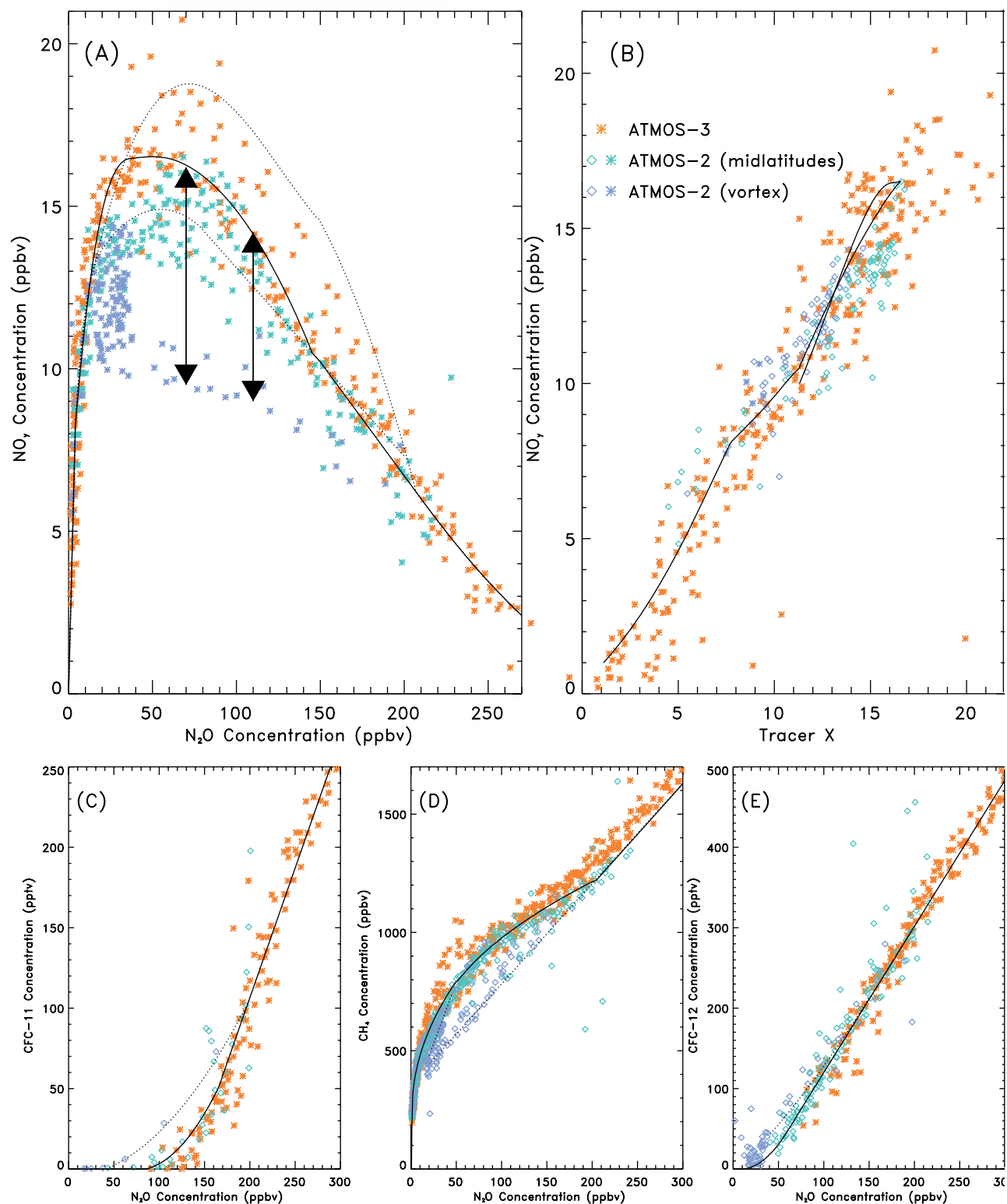
**Figure 3.** Tracer-tracer scatter plots from the chemical transport model experiment of *Waugh et al.* [1997b]: (a) CFC-11: $\text{N}_2\text{O}$ , (b)  $\text{CH}_4$ : $\text{N}_2\text{O}$ , (c) CFC-113: $\text{N}_2\text{O}$ , and (d) CFC-12: $\text{N}_2\text{O}$ . Details are as for Figure 2.



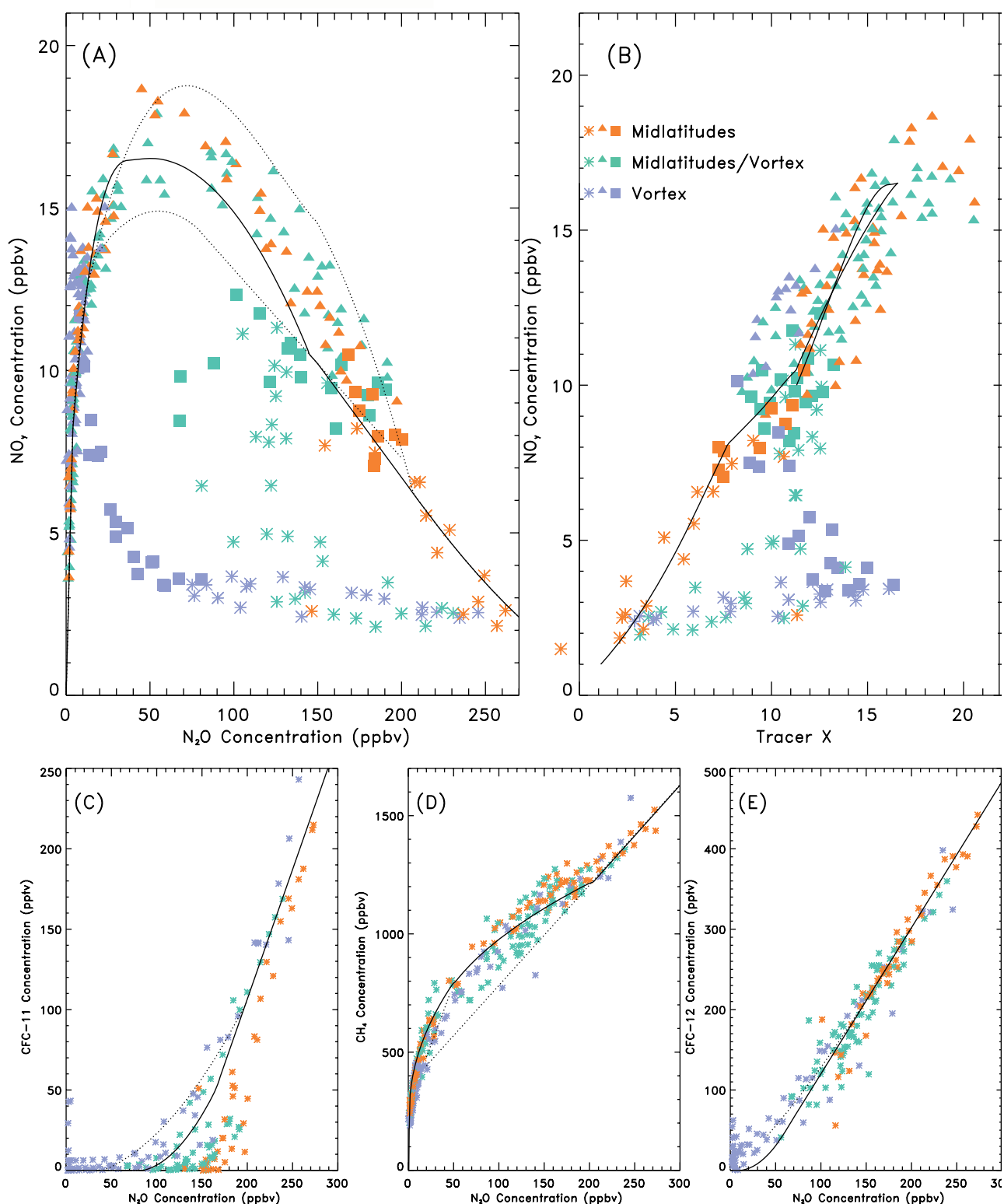
**Figure 4.** Tracer-tracer scatter plots of data collected during POLARIS (spring–summer 1997), including ER-2 and MkIV data: (a)  $\text{NO}_y:\text{N}_2\text{O}$ , (b)  $\text{NO}_y:\text{Y}$ , and (c)  $\text{NO}_y:\text{Z}$ . Small triangles correspond to ER-2 measurements and squares to MkIV measurements. Cyan and green correspond to “apparently denitrified” air in Figure 4a, and blue and orange to air with standard midlatitude correlations. Error bars showing the  $1\sigma$  accuracy of the measurements are included on some points. See the discussion in the text regarding the error bars on Y and Z.



**Figure 5.** Tracer-tracer scatter plots from POLARIS: (a) CH<sub>4</sub>:N<sub>2</sub>O, (b) CFC-12:N<sub>2</sub>O, (c) CFC-11:N<sub>2</sub>O, and (d) CFC-113:N<sub>2</sub>O. Details as Figure 4.



**Figure 6.** Tracer-tracer scatter plots of data collected during ATLAS 2 and ATLAS 3 (1993–1994): (a)  $\text{NO}_y:\text{N}_2\text{O}$ , (b)  $\text{NO}_y:\text{X}$ , (c)  $\text{CFC-11}:\text{N}_2\text{O}$ , (d)  $\text{CH}_4:\text{N}_2\text{O}$ , and (e)  $\text{CFC-12}:\text{N}_2\text{O}$ . Red points correspond to ATLAS 3 data, green to ATLAS 2 midlatitude and blue to ATLAS 2 vortex data. The diamonds and stars in Figure 6b correspond to different ways of estimating X as described in the text. The dotted lines in Figure 6a are the (top) tropical and (bottom) protovortex canonical relationships [Michelsen *et al.*, 1998b].



**Figure 7.** As Figure 6 but showing ATLAS 3 data measured in the Southern Hemisphere in November 1994: (a)  $NO_y:N_2O$ , (b)  $NO_y:X$ , (c) CFC-11: $N_2O$ , (d)  $CH_4:N_2O$ , and (e) CFC-12: $N_2O$ . In this plot, red points correspond to occultations measuring midlatitude air and blue points to vortex air. Green points indicate that the occultation intersects the vortex edge. In Figures 7a and 7b, stars indicate measurements below 19 km, squares 19–23 km and triangles measurements from above 23 km.