



**Are Bigger Brains Better? (🧠 A Brain Facts Story)**  
**(1<sup>st</sup> – 6-7 yrs.)**  
**Game: Brain Match Game**



**STORY CONNECTION-SLIDE 3 (Approx Time: 10-15 mins)**

All animals have brains (or a nervous system) – even bugs like this bumblebee and worms!!! “Brains” in different animals look different...hmmmm...why do brains in different animals look different?

**Materials needed:**

- The Brain Match Game (included below)
- Paper
- Pencils
- *OPTIONAL:* <https://www.youtube.com/watch?v=iCXSZQSWwdM> (1:34)

**Preparation needed:**

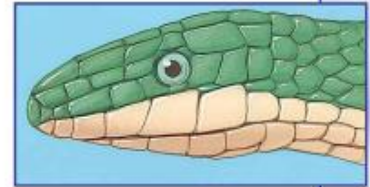
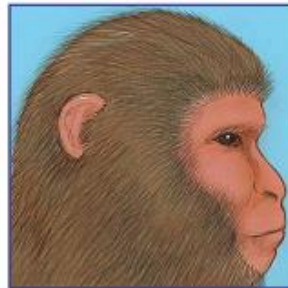
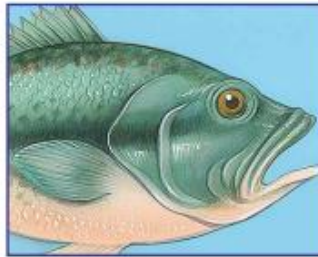
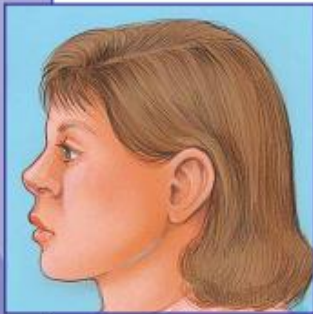
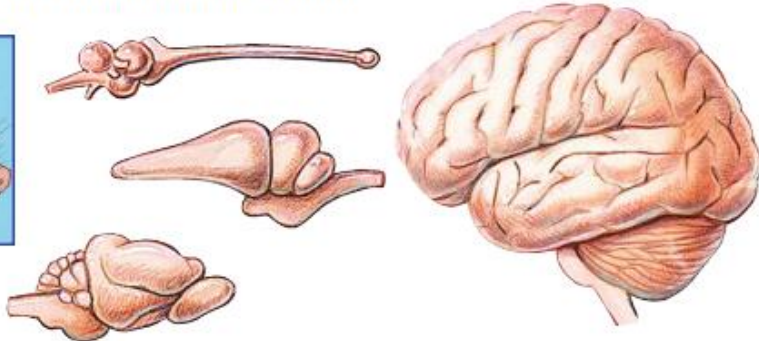
- Determine how to display The Brain Match Game
  - This can be projected for all student(s) to see or printed to use with student(s).

**Instructions:**

1. Begin by reviewing (if necessary) what student(s) learned in the video about animals and brain size.  
*\*\*OPTOINAL: Watch the video again if needed. <https://www.youtube.com/watch?v=iCXSZQSWwdM> \*\**
2. Next, explain to student(s) they will make predictions as to which brain belongs to which animal.
3. Display the Brain Match Game or pass each student a sheet.
4. Have student(s) write down their predictions (on their own paper or on the game sheet).  
*\*\*NOTE: Going clockwise, the animals are bird, snake, chimpanzee, fish, human, opossum. \*\**
5. Ask student(s) to share their predictions and why they made these predictions. (size, shape, guesses, etc.)
6. Go through each animal and tell the student(s) the correct answers. The answer key is included below.
7. Conclude the game by asking the following questions:
  - a. How many did you match correctly?
  - b. What do you notice about the brains that is the same?
  - c. What do you notice about the brains that is different?
  - d. What do you think this tells you about the animals and their brains?

## *The Brain Match Game*

In what ways do these brains look alike? In what ways are they different? Match each animal to its brain.

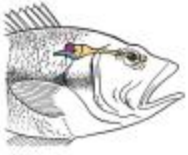


See Answers to the "The Brain Match Game" on page 3.

Baylor  
College of  
Medicine



## Answers to “The Brain Match Game”



**Fish**



**Snake**



**Bird**



**Opossum**



**Chimpanzee**



**Human**

Game Credits: <https://www.bioedonline.org/BioEd/cache/file/6DA46C97-ECDE-B7F3-32254432B426A260.pdf>