

Appendix 3: SAP Master Data Overview

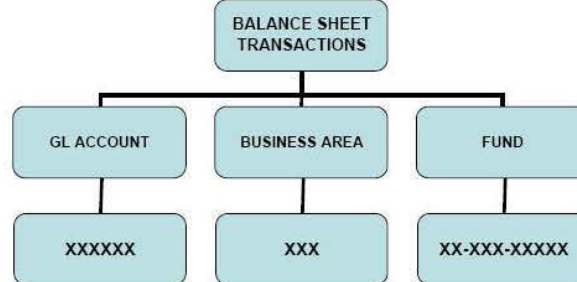
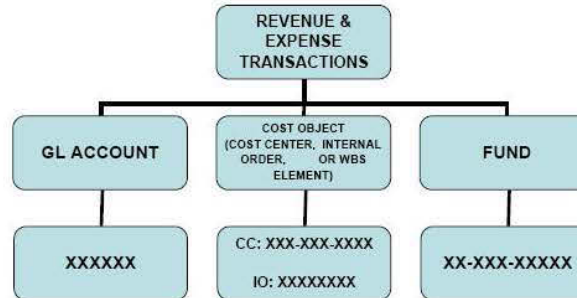
JOHNS HOPKINS UNIVERSITY ACCOUNT STRUCTURES IN SAP

GENERAL LEDGER ACCOUNTS

100000 - 199999	ASSETS
200000 - 299999	LIABILITIES
300000 - 399999	EQUITY
400000 - 499999	REVENUES
500000 - 599999	NET ASSET TRANSFERS
600000 - 699999	EXPENSES

BUSINESS AREAS (JHU ONLY)

100	INSTITUTION WIDE FUNDS
101	UNIVERSITY ADMINISTRATION
102	JHU ENDOWMENT INVESTMENT POOL
103	JHU TEMPORARY INVESTMENT POOL
104	APPLIED PHYSICS LAB
105	APL CONSOLIDATIONS
106	ENDOWMENT INVESTMENT POOL
110	HOMEWOOD STUDENT AFFAIRS
115	KRIEGER SCH. OF ARTS & SCIENCE
120	WHITING SCHOOL OF ENGINEERING
125	SCHOOL OF EDUCATION
126	CAREY BUSINESS SCHOOL
130	SHERIDAN LIBRARIES
135	PEABODY INSTITUTE
140	NITZE SCH ADV INT STUDIES-SAIS
141	BOLOGNA CENTER
142	NANJING CENTER
160	BLOOMBERG SCH OF PUBLIC HEALTH
165	SCHOOL OF NURSING
170	SCHOOL OF MEDICINE
171	JH ACADEMIC DIV OF SINGAPORE
172	FREDERICK NICU
173	HOWARD COUNTY NICU
174	WHITESQUARE NEPHROLOGY
175	SOM INVESTMENT IN AFFILIATES
200	ACADEMIC & CULTURAL CENTERS
205	AICGS
210	BIOETHICS INSTITUTE
211	HUMAN LANGUAGE TECHNOLOGY COE
215	CENTER FOR TALENTED YOUTH
220	EVERGREEN HOUSE
225	HOMEWOOD HOUSE
235	JHPIEGO
240	MONTGOMERY COUNTY CENTER
245	INSTITUTE FOR POLICY STUDIES
250	JHU PRESS
251	JHU PRESS BOOK DIVISION
252	JHU PRESS JOURNALS DIVISION
253	JHU PRESS FULFILLMENT DIVISION
254	JHU PRESS SPECIAL PROJECTS
255	JHU PRESS MUSE
256	JHU PRESS DESIGNATED
920	HEBCAC



FUNDS

(1) (2) (3) (4) (5) (6) (7) (8) (9) (10)

(1), (2)	FUND TYPE
(3), (4), (5)	BUSINESS AREA
(6) - (10)	UNIQUE NUMBERING PER DIVISIONS

EXCEPTIONS (SPONSORED FUNDS):

9000000000	External Fund - Gov't (Federal, State, Local)
9100000000	External Fund - Private

FUND TYPES

10	General Operating Fund
11	Clinical & Health Services Fund
12	Auxiliary Enterprises Fund
13	Discretionary Fund
14	Service & Revolving Fund
15	Debt Fund
16	Patent and Royalty Funds
17	Plant Funds
18	Asset Conversion Funds
19	GAAP Adjustments
20	Restricted Gift Fund
30	Restricted Endowment Income Fund
34	Investment Funds
35	Endowment Principal & Annuity Fund
40	Student Loan Funds
50	Agency Funds
80	Other Funds
90	Sponsored Fund
91	Private Funds

INTERNAL ORDERS

9XXXXXXX	SPONSORED PROGRAMS (GM Module)
10000000	ALL OTHER INTERNAL ORDERS
-89999999	

COST CENTERS

(1) (2) (3) (4) (5) (6) (7) (8) (9) (10)

(1), (2), (3)	BUSINESS AREA
(4), (5), (6)	DEPARTMENT
(7), (8), (9), (10)	SUB-DEPT / OTHER SUB-ORGANIZATION LEVEL